

报告编号:

测试时间: 2002-1-1 5:48:16

灯具光度测试报告

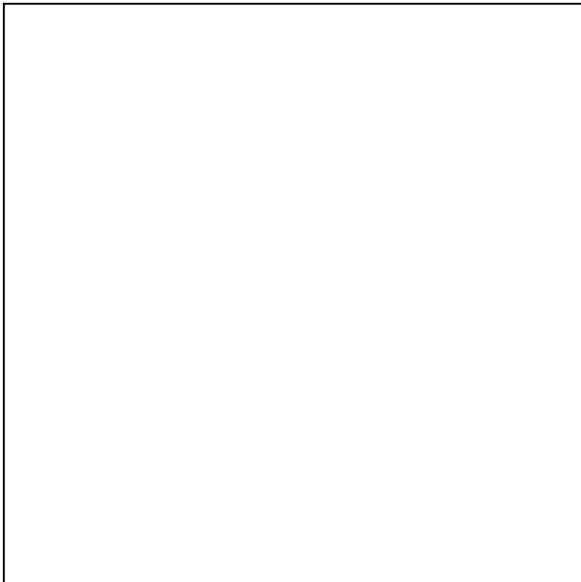
灯具属性

| | |
|--------------|-----------------|
| 生产工厂: 0 | 电压(V): 220.99 V |
| 灯具规格: | 电流(A): 0.0970 A |
| 光源规格: | 功率(W): 13.00 W |
| 发光面宽度: 80 mm | 功率因数: 0.6066 |
| 发光面长度: 80 mm | 光源光通量: 718.46 |
| 发光面高度: 80 mm | |

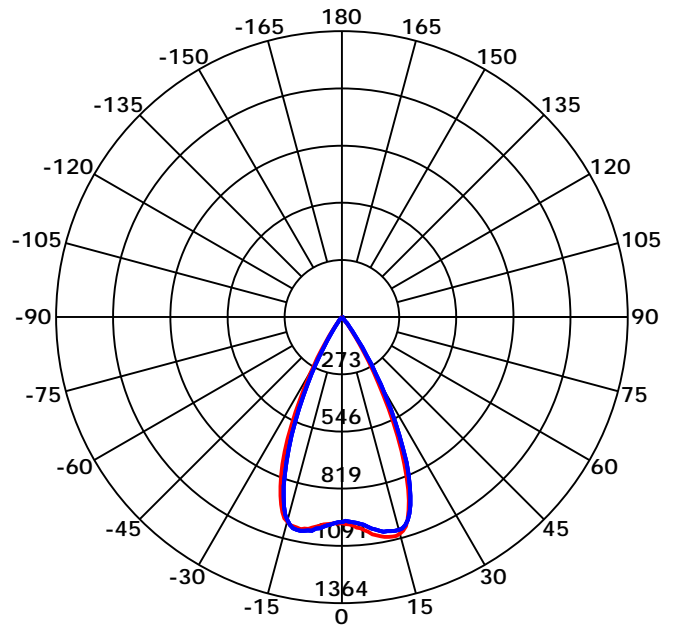
光度结果

| | |
|-------------------------------------|---------------------------------------|
| CIE 等级: Direct | 最大光强: 1091.34 cd |
| 灯具光通量: 718.4591 lm | 最大光强角: C=315 Gamma=13 |
| 下射光通比: 100.00% | 上射光通比: 0.00% |
| 灯具光效(LER): 55.27 lm/W | 灯具效率: 100.00% |
| 光束角(50%) C0-180,C90-270: 51.8,51.9 | 中心光强: 983.29 cd |
| 视场角(10%) C0-180,C90-270: 68.5,68.8 | 有效光通量: 693.08 lm |
| 距高比S/MH C0-180,C90-270: 0.933,0.890 | 光通量ERP(φ use)120度: 718.46 lm |

灯具图片



光强分布曲线



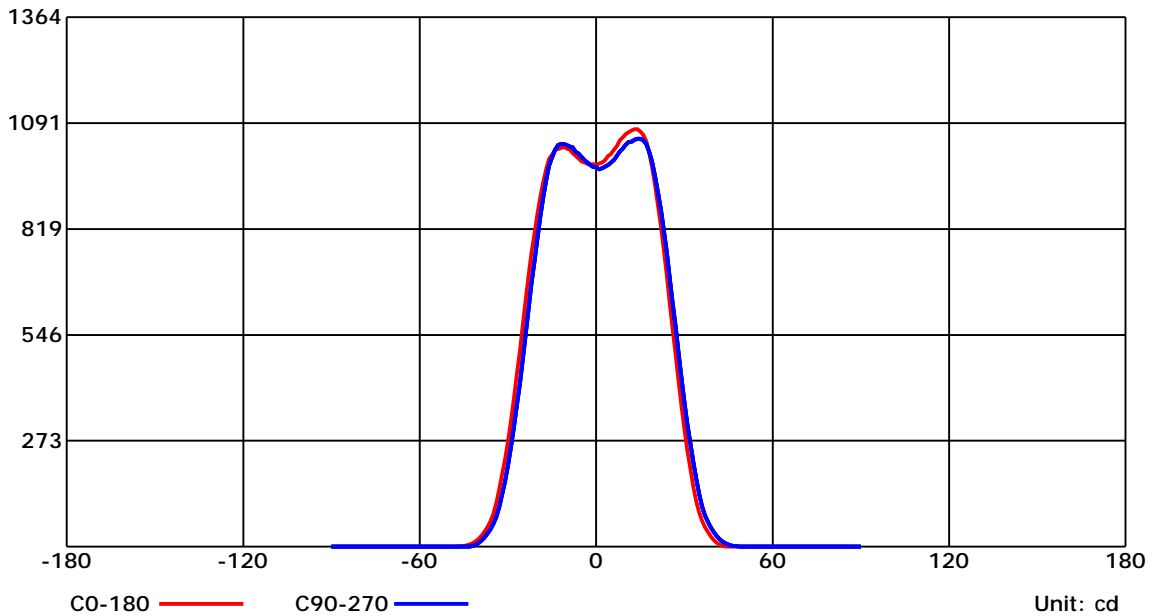
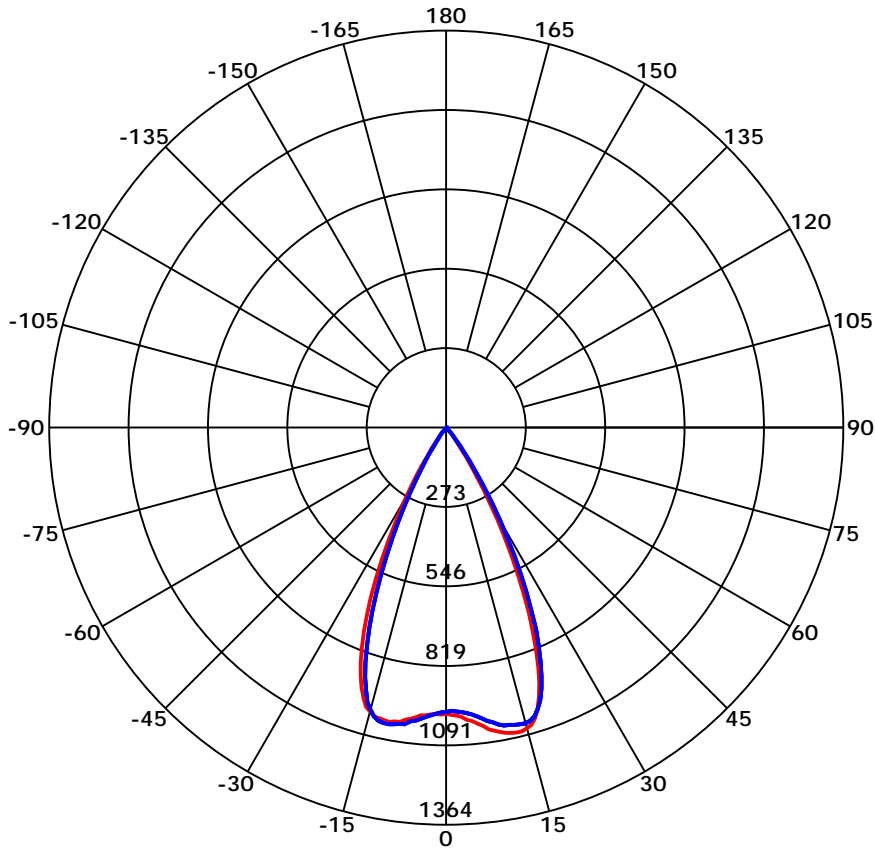
光束角(50%) C0-180,C90-270: 51.8 deg,51.9 deg

C0-180 — C90-270

C角度范围: 0 - 360 Deg
 C角度间隔: 45.0 Deg
 测试速度: High
 环境温度:
 测试人员:
 测试日期: 2002-1-1 5:48:16

G角度范围: 0 - 90 Deg
 G角度间隔: 1.0 Deg
 测试系统: Huipu CPM-1800B Goniophotometer
 环境湿度:
 测试距离: 9.22 m
 备注:

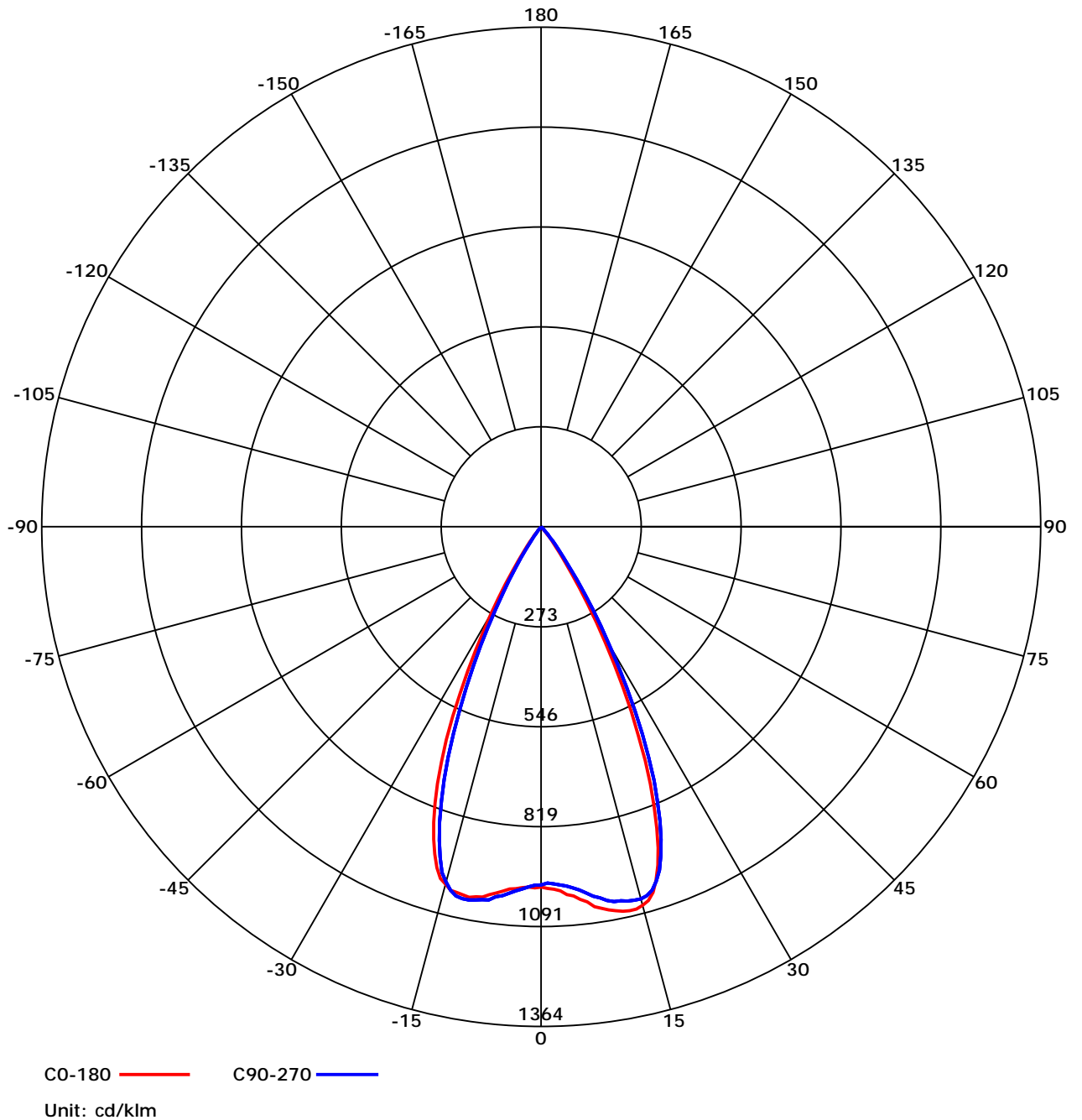
光强分布曲线



C角度范围: 0 - 360 Deg
 C角度间隔: 45.0 Deg
 测试速度: High
 环境温度:
 测试人员:
 测试日期: 2002-1-1 5:48:16

G角度范围: 0 - 90 Deg
 G角度间隔: 1.0 Deg
 测试系统: Huipu CPM-1800B Goniophotometer
 环境湿度:
 测试距离: 9.22 m
 备注:

光强分布曲线



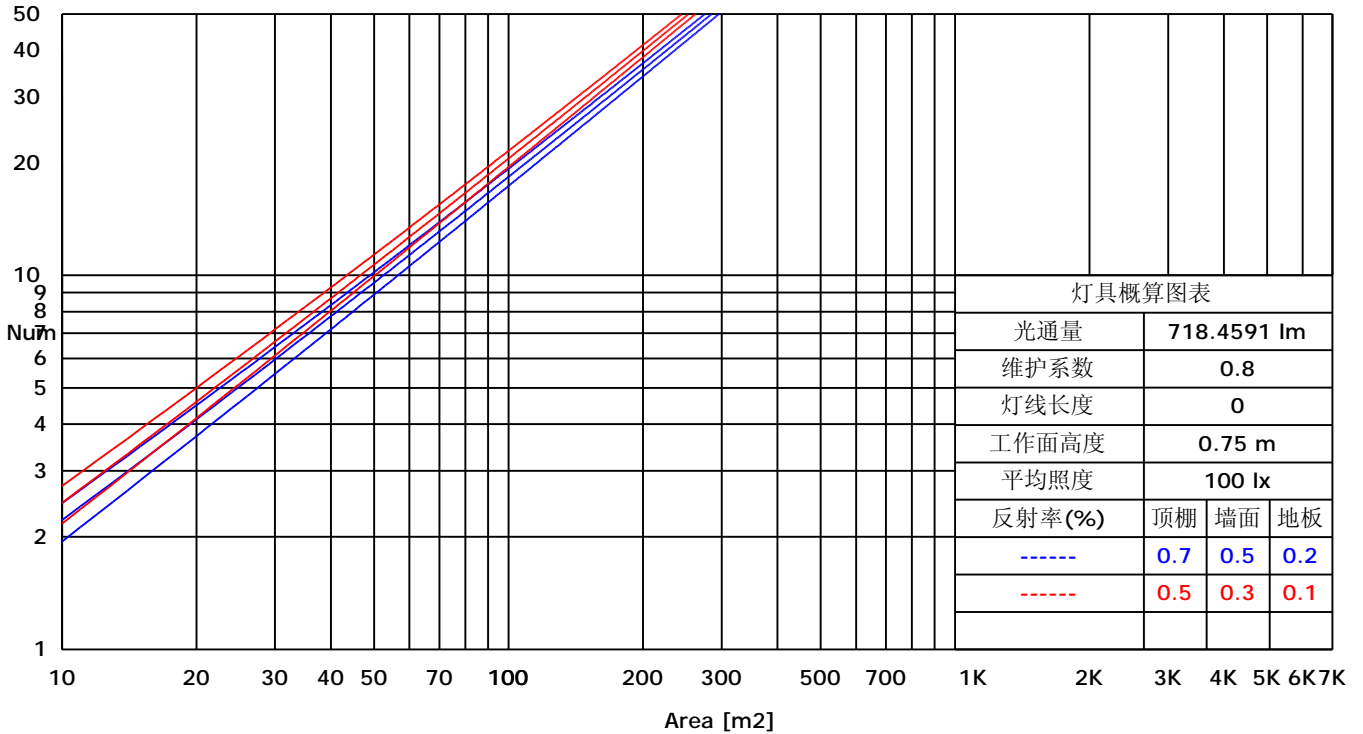
C角度范围: 0 - 360 Deg
 C角度间隔: 45.0 Deg
 测试速度: High
 环境温度:
 测试人员:
 测试日期: 2002-1-1 5:48:16

G角度范围: 0 - 90 Deg
 G角度间隔: 1.0 Deg
 测试系统: Huipu CPM-1800B Goniophotometer
 环境湿度:
 测试距离: 9.22 m
 备注:

利用系数图表(TM5)

| RHOCC | 80 | | | 70 | | | 50 | | | 30 | | | 10 | | | 0 |
|-------|--|------|------|------|------|------|------|------|------|------|------|------|------|------|------|------|
| RHOW | 50 | 30 | 10 | 50 | 30 | 10 | 50 | 30 | 10 | 50 | 30 | 10 | 50 | 30 | 10 | 0 |
| RCR | COEFFICIENTS OF UTILIZATION FOR RHOFC=20 | | | | | | | | | | | | | | | |
| 0 | 1.19 | 1.19 | 1.19 | 1.16 | 1.16 | 1.16 | 1.11 | 1.11 | 1.11 | 1.06 | 1.06 | 1.06 | 1.02 | 1.02 | 1.02 | 1.00 |
| 1 | 1.05 | 1.03 | 1.02 | 1.04 | 1.02 | 1.00 | 1.00 | 0.98 | 0.96 | 0.95 | 0.93 | 0.91 | 0.89 | 0.86 | 0.84 | 0.79 |
| 2 | 1.02 | 1.00 | 0.99 | 1.00 | 0.98 | 0.97 | 0.97 | 0.95 | 0.93 | 0.93 | 0.90 | 0.88 | 0.87 | 0.84 | 0.82 | 0.77 |
| 3 | 0.99 | 0.97 | 0.96 | 0.97 | 0.95 | 0.94 | 0.94 | 0.92 | 0.90 | 0.90 | 0.88 | 0.85 | 0.85 | 0.82 | 0.80 | 0.75 |
| 4 | 0.96 | 0.95 | 0.94 | 0.95 | 0.93 | 0.92 | 0.92 | 0.89 | 0.87 | 0.88 | 0.85 | 0.83 | 0.84 | 0.80 | 0.78 | 0.74 |
| 5 | 0.94 | 0.92 | 0.92 | 0.92 | 0.91 | 0.89 | 0.90 | 0.87 | 0.85 | 0.86 | 0.83 | 0.81 | 0.82 | 0.79 | 0.76 | 0.72 |
| 6 | 0.91 | 0.90 | 0.89 | 0.90 | 0.88 | 0.87 | 0.87 | 0.85 | 0.83 | 0.84 | 0.81 | 0.79 | 0.80 | 0.77 | 0.74 | 0.70 |
| 7 | 0.89 | 0.88 | 0.88 | 0.88 | 0.86 | 0.85 | 0.85 | 0.83 | 0.81 | 0.82 | 0.79 | 0.77 | 0.79 | 0.75 | 0.72 | 0.69 |
| 8 | 0.87 | 0.86 | 0.86 | 0.86 | 0.85 | 0.84 | 0.84 | 0.81 | 0.79 | 0.81 | 0.77 | 0.75 | 0.77 | 0.74 | 0.71 | 0.67 |
| 9 | 0.86 | 0.85 | 0.84 | 0.84 | 0.83 | 0.82 | 0.82 | 0.79 | 0.78 | 0.79 | 0.76 | 0.74 | 0.76 | 0.72 | 0.69 | 0.66 |
| 10 | 0.84 | 0.83 | 0.82 | 0.83 | 0.81 | 0.80 | 0.80 | 0.78 | 0.76 | 0.77 | 0.74 | 0.72 | 0.74 | 0.71 | 0.68 | 0.65 |

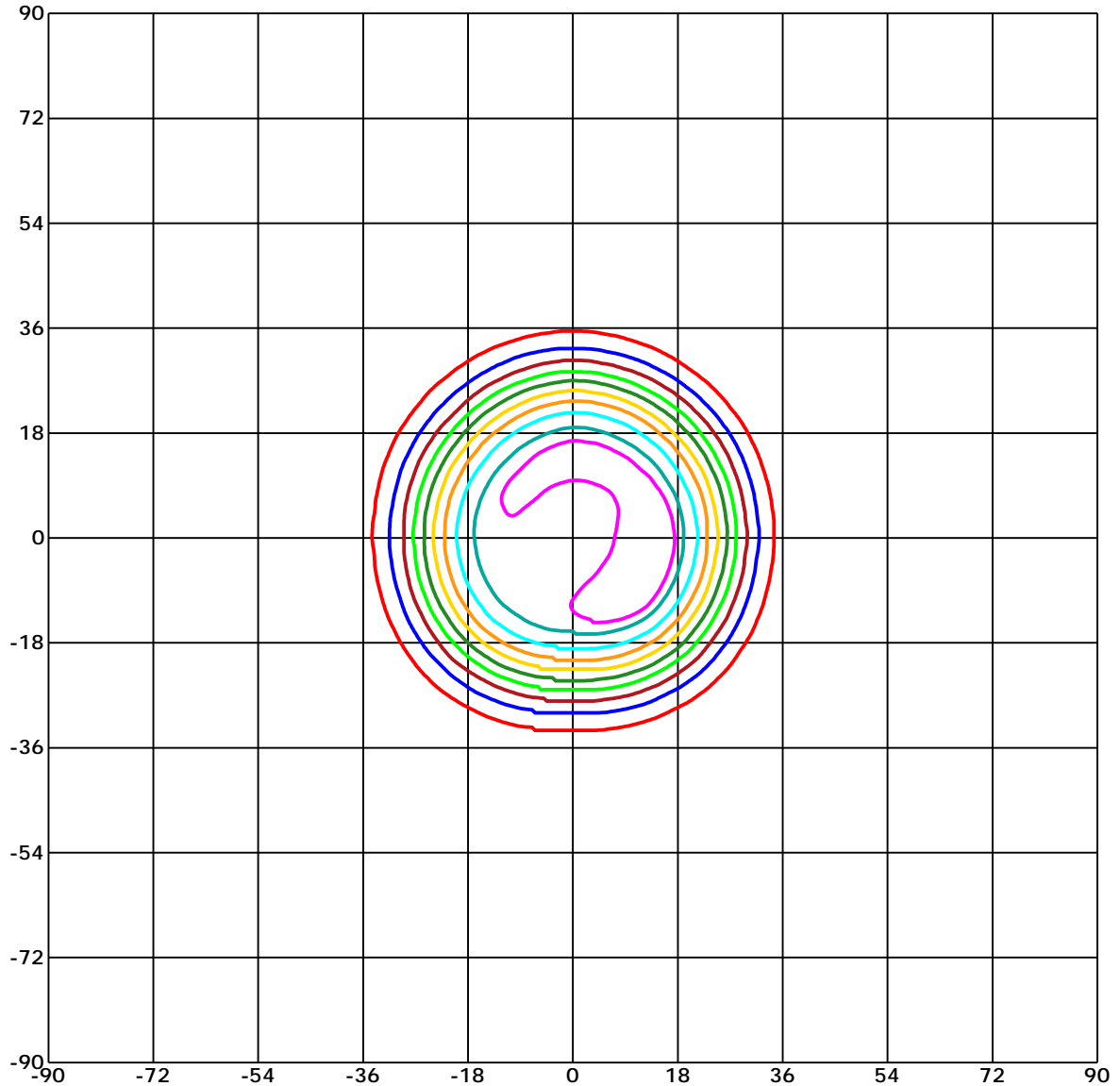
概算曲线



C角度范围: 0 - 360 Deg
 C角度间隔: 45.0 Deg
 测试速度: High
 环境温度:
 测试人员:
 测试日期: 2002-1-1 5:48:16

G角度范围: 0 - 90 Deg
 G角度间隔: 1.0 Deg
 测试系统: Huipu CPM-1800B Goniophotometer
 环境湿度:
 测试距离: 9.22 m
 备注:

矩形等光强曲线



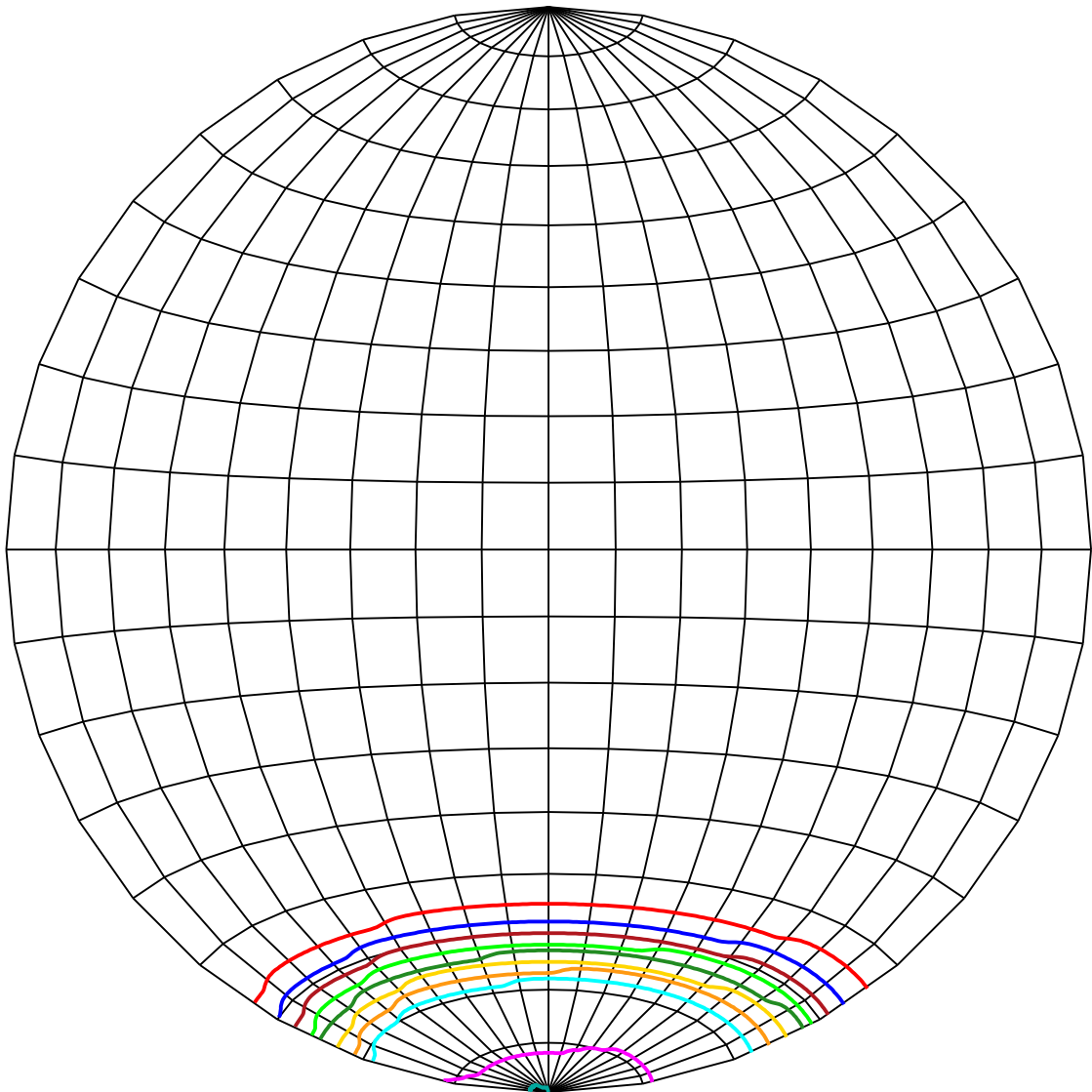
Unit of intensity:cd $I_{max}(100\%)$: 1091.338 cd

- | | |
|----------------------------|---------------------------|
| — 1036.771(95% I_{max}) | — 545.669(50% I_{max}) |
| — 982.204(90% I_{max}) | — 436.535(40% I_{max}) |
| — 873.07(80% I_{max}) | — 327.401(30% I_{max}) |
| — 763.937(70% I_{max}) | — 218.268(20% I_{max}) |
| — 654.803(60% I_{max}) | — 109.134(10% I_{max}) |

C角度范围: 0 - 360 Deg
 C角度间隔: 45.0 Deg
 测试速度: High
 环境温度:
 测试人员:
 测试日期: 2002-1-1 5:48:16

G角度范围: 0 - 90 Deg
 G角度间隔: 1.0 Deg
 测试系统: Huipu CPM-1800B Goniophotometer
 环境湿度:
 测试距离: 9.22 m
 备注:

球面等光强曲线



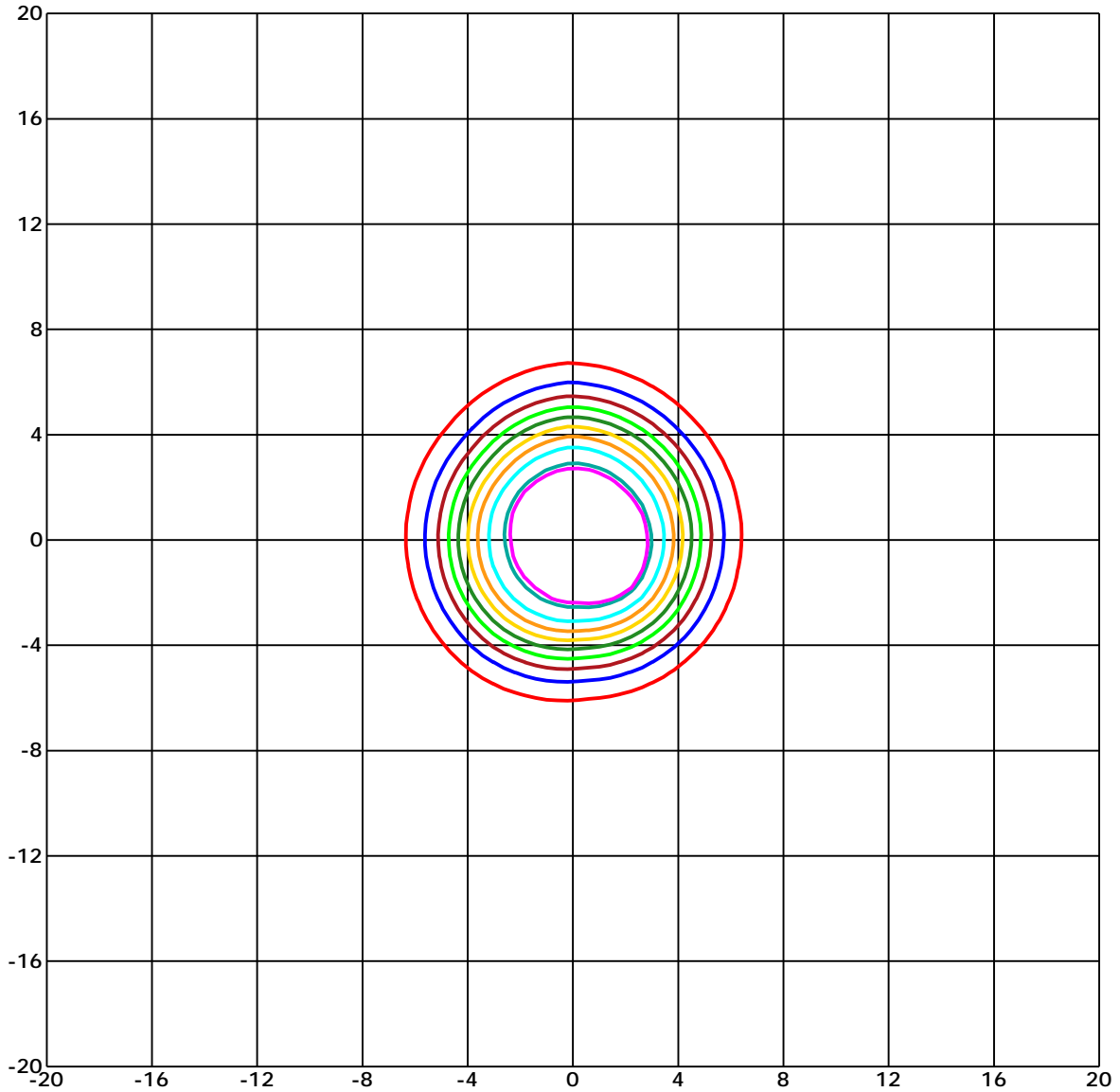
Unit of intensity:cd I_{max}(100%): 1091.338 cd

- | | |
|----------------------------------|---------------------------------|
| — 1036.771(95%I _{max}) | — 545.669(50%I _{max}) |
| — 982.204(90%I _{max}) | — 436.535(40%I _{max}) |
| — 873.07(80%I _{max}) | — 327.401(30%I _{max}) |
| — 763.937(70%I _{max}) | — 218.268(20%I _{max}) |
| — 654.803(60%I _{max}) | — 109.134(10%I _{max}) |

C角度范围: 0 - 360 Deg
 C角度间隔: 45.0 Deg
 测试速度: High
 环境温度:
 测试人员:
 测试日期: 2002-1-1 5:48:16

G角度范围: 0 - 90 Deg
 G角度间隔: 1.0 Deg
 测试系统: Huipu CPM-1800B Goniophotometer
 环境湿度:
 测试距离: 9.22 m
 备注:

平面等照度曲线



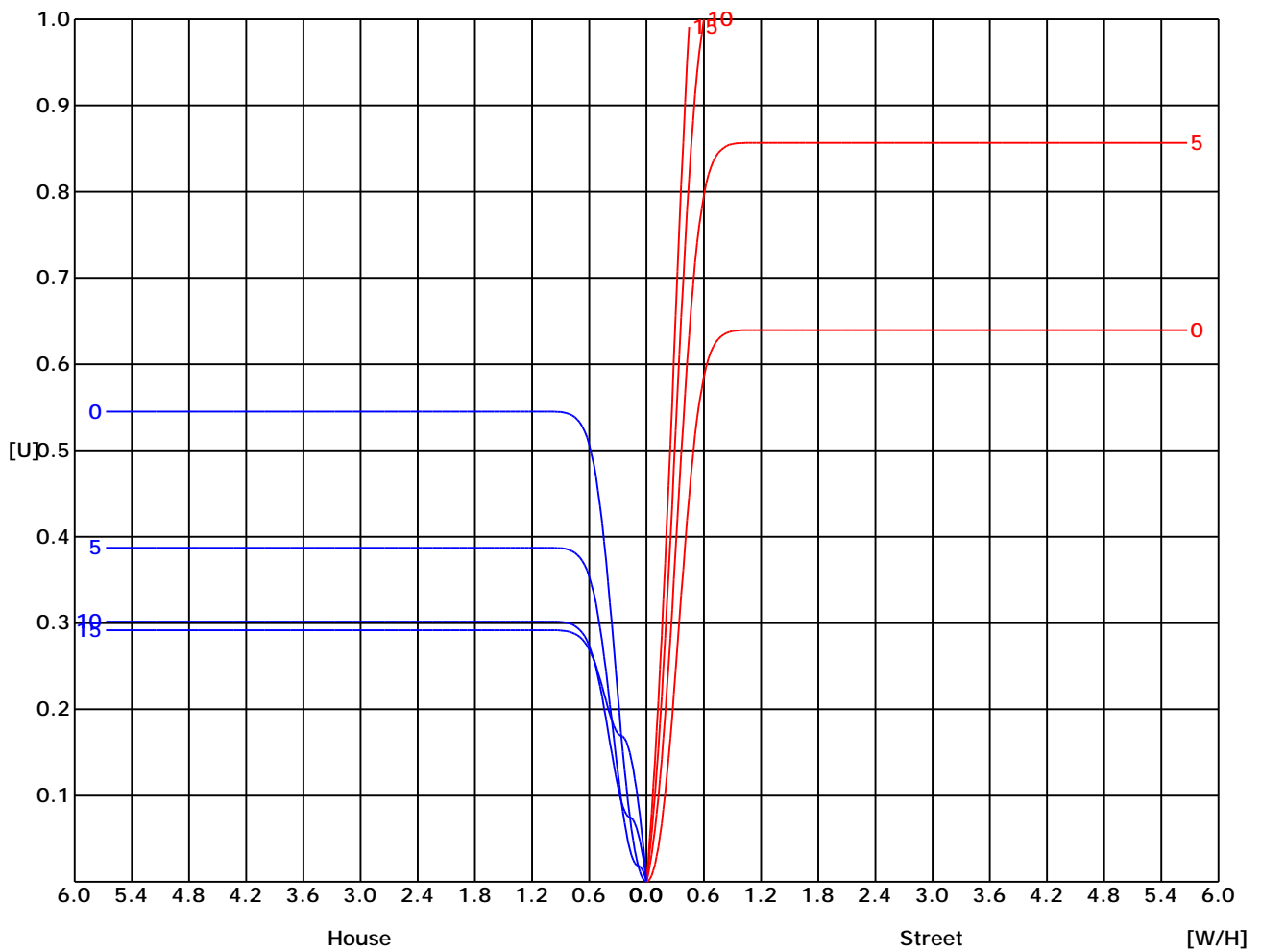
Unit of illumination: lx Height of plane: 10.0(m)/32.81(ft)

- | | |
|-----------------|-----------------|
| — 9.426(1%Emax) | — 5.123(0%Emax) |
| — 9.221(1%Emax) | — 4.098(0%Emax) |
| — 8.197(1%Emax) | — 3.074(0%Emax) |
| — 7.172(1%Emax) | — 2.049(0%Emax) |
| — 6.147(1%Emax) | — 1.025(0%Emax) |

C角度范围: 0 - 360 Deg
 C角度间隔: 45.0 Deg
 测试速度: High
 环境温度:
 测试人员:
 测试日期: 2002-1-1 5:48:16

G角度范围: 0 - 90 Deg
 G角度间隔: 1.0 Deg
 测试系统: Huipu CPM-1800B Goniophotometer
 环境湿度:
 测试距离: 9.22 m
 备注:

路灯利用系数曲线

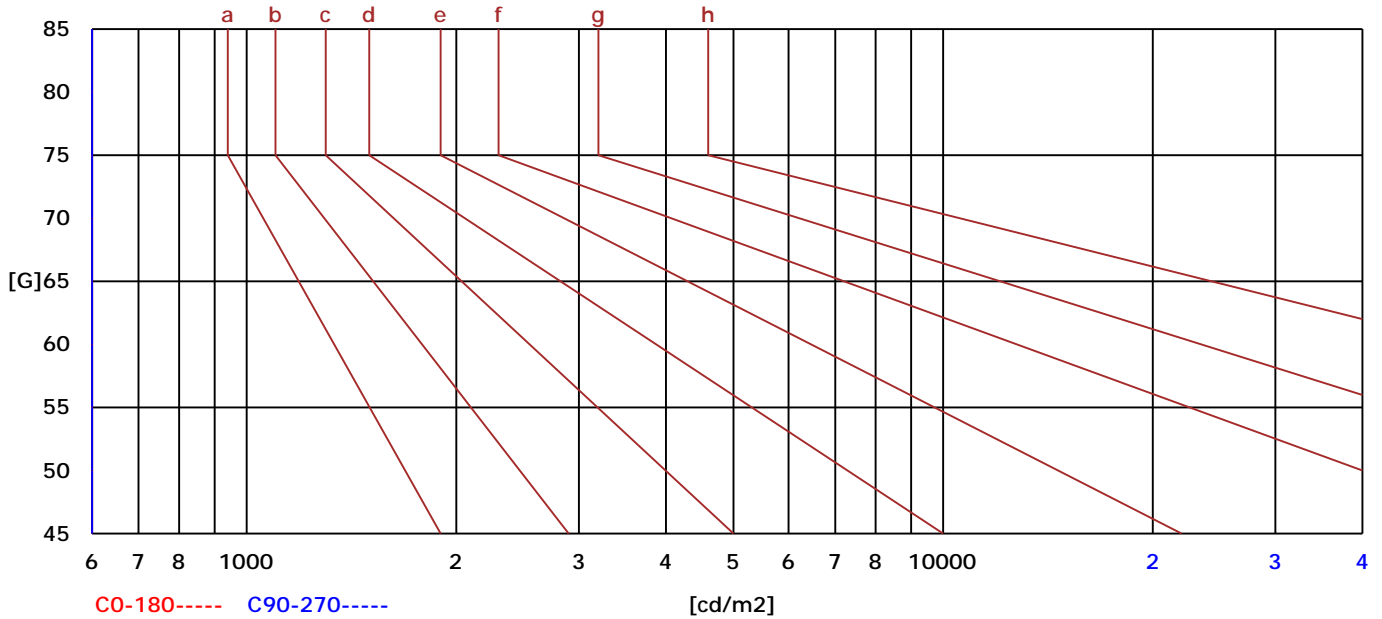


C角度范围: 0 - 360 Deg
 C角度间隔: 45.0 Deg
 测试速度: High
 环境温度:
 测试人员:
 测试日期: 2002-1-1 5:48:16

G角度范围: 0 - 90 Deg
 G角度间隔: 1.0 Deg
 测试系统: Huipu CPM-1800B Goniophotometer
 环境湿度:
 测试距离: 9.22 m
 备注:

亮度限制曲线

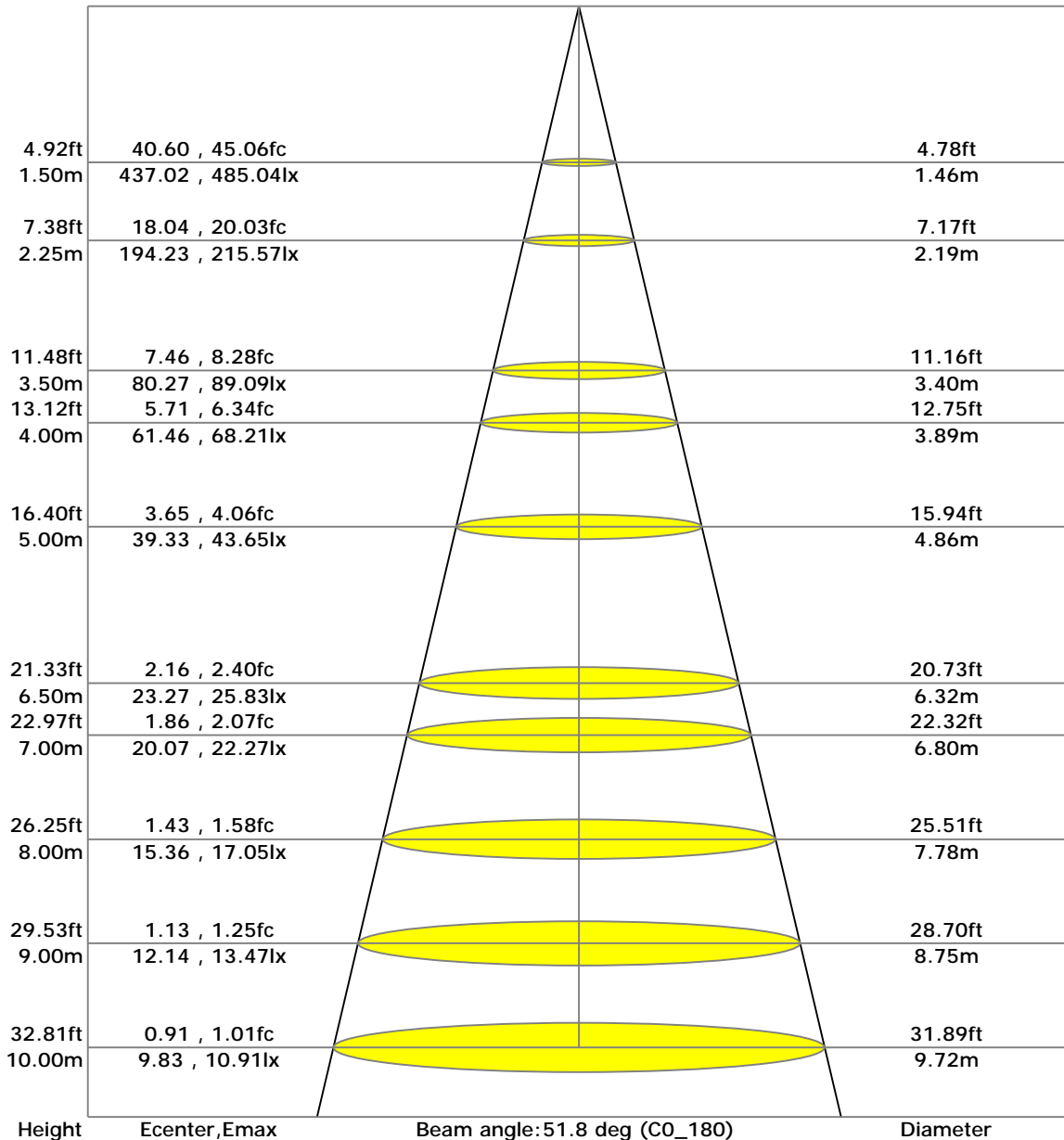
| C/G | 45 | 50 | 55 | 60 | 65 | 70 | 75 | 80 | 85 |
|--------|---------|-------------|------|------|-------|-------|-------|-------|-------|
| C0 | 0 | 0 | 0 | 0 | 0 | 0 | 0 | 0 | 0 |
| C90 | 0 | 0 | 0 | 0 | 0 | 0 | 0 | 0 | 0 |
| Dazzle | Quality | Illuminance | --- | --- | --- | --- | --- | --- | --- |
| 1.15 | A | 2000 | 1000 | 500 | <=300 | | | | |
| 1.5 | B | | 2000 | 1000 | 500 | <=300 | | | |
| 1.85 | C | | | 2000 | 1000 | 500 | <=300 | | |
| 2.2 | D | | | | 2000 | 1000 | 500 | <=300 | |
| 2.55 | E | | | | | 2000 | 1000 | 500 | <=300 |
| --- | --- | a | b | c | d | e | f | g | h |



C角度范围: 0 - 360 Deg
 C角度间隔: 45.0 Deg
 测试速度: High
 环境温度:
 测试人员:
 测试日期: 2002-1-1 5:48:16

G角度范围: 0 - 90 Deg
 G角度间隔: 1.0 Deg
 测试系统: Huipu CPM-1800B Goniophotometer
 环境湿度:
 测试距离: 9.22 m
 备注:

照度距离曲线



C角度范围: 0 - 360 Deg
 C角度间隔: 45.0 Deg
 测试速度: High
 环境温度:
 测试人员:
 测试日期: 2002-1-1 5:48:16

G角度范围: 0 - 90 Deg
 G角度间隔: 1.0 Deg
 测试系统: Huipu CPM-1800B Goniophotometer
 环境湿度:
 测试距离: 9.22 m
 备注:

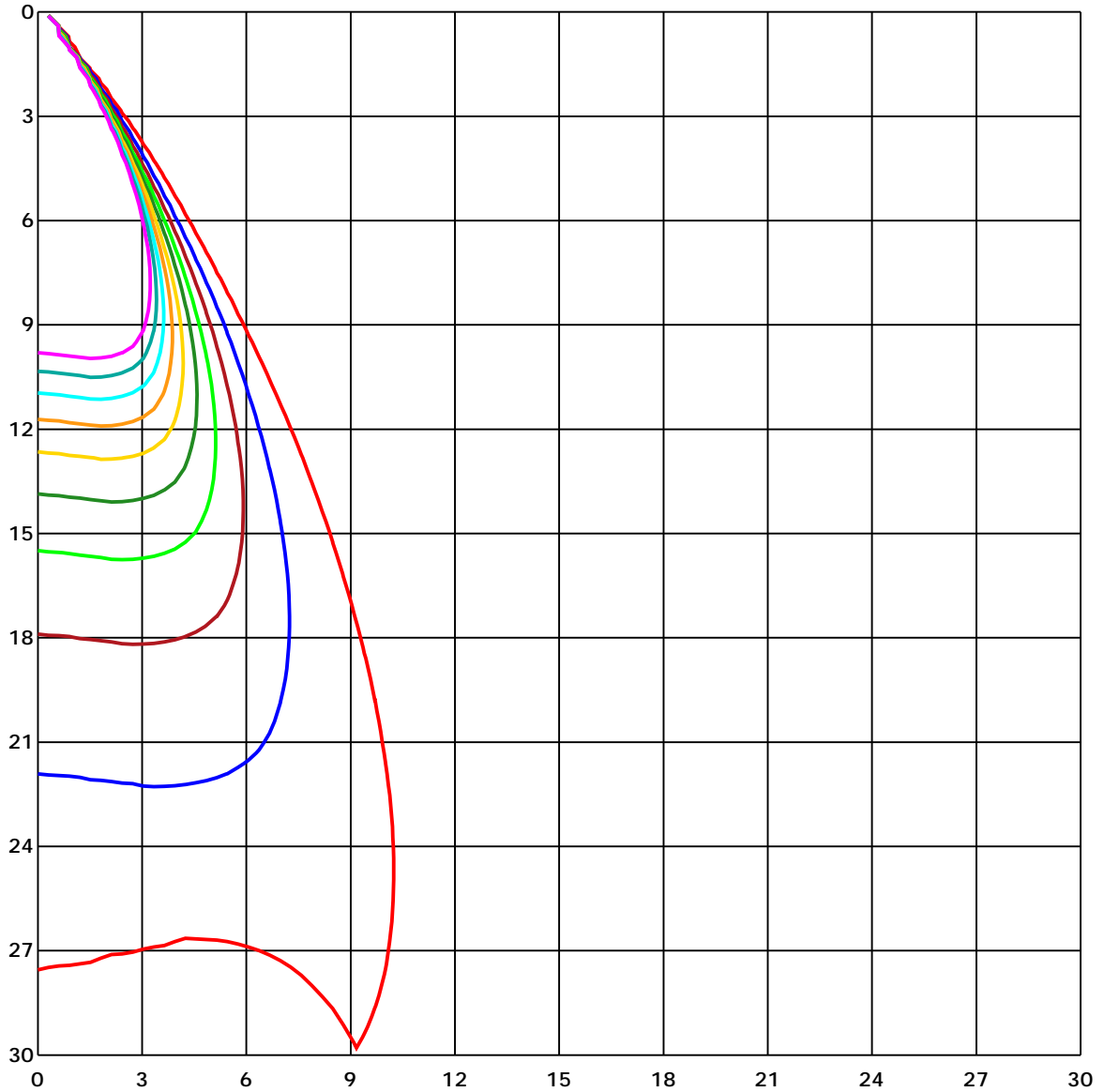
UGR(Unified Glare Rating) TABLE

| 天花板反射比 | 70 | 70 | 50 | 50 | 30 | 70 | 70 | 50 | 50 | 30 |
|-------------|---------------------|-------|-------|-------|-------|-----------------------|-------|-------|-------|-------|
| 墙面反射比 | 50 | 30 | 50 | 30 | 30 | 50 | 30 | 50 | 30 | 30 |
| 地面反射比 | 20 | 20 | 20 | 20 | 20 | 20 | 20 | 20 | 20 | 20 |
| 房间尺寸 X Y | 向前 (Viewed Endwise) | | | | | 交叉 (Viewed Crosswise) | | | | |
| 2H 2H | 13.55 | 13.60 | 13.75 | 13.78 | 14.03 | 14.13 | 14.18 | 14.33 | 14.37 | 14.61 |
| 3H | 13.53 | 13.57 | 13.73 | 13.77 | 14.01 | 14.11 | 14.16 | 14.32 | 14.35 | 14.60 |
| 4H | 13.51 | 13.56 | 13.72 | 13.76 | 14.01 | 14.10 | 14.14 | 14.31 | 14.34 | 14.59 |
| 6H | 13.50 | 13.55 | 13.71 | 13.75 | 14.00 | 14.08 | 14.13 | 14.30 | 14.33 | 14.58 |
| 8H | 13.49 | 13.54 | 13.71 | 13.74 | 14.00 | 14.07 | 14.12 | 14.29 | 14.33 | 14.58 |
| 12H | 13.48 | 13.53 | 13.70 | 13.74 | 13.99 | 14.07 | 14.11 | 14.29 | 14.32 | 14.57 |
| 4H 2H | 13.51 | 13.56 | 13.72 | 13.76 | 14.01 | 14.10 | 14.14 | 14.31 | 14.34 | 14.59 |
| 3H | 13.48 | 13.53 | 13.70 | 13.74 | 13.99 | 14.07 | 14.11 | 14.29 | 14.32 | 14.57 |
| 4H | 13.47 | 13.51 | 13.69 | 13.73 | 13.98 | 14.05 | 14.10 | 14.28 | 14.31 | 14.57 |
| 6H | 13.44 | 13.49 | 13.68 | 13.71 | 13.98 | 14.03 | 14.07 | 14.26 | 14.29 | 14.56 |
| 8H | 13.43 | 13.48 | 13.68 | 13.70 | 13.97 | 14.02 | 14.06 | 14.26 | 14.29 | 14.55 |
| 12H | 13.42 | 13.47 | 13.67 | 13.70 | 13.97 | 14.00 | 14.05 | 14.25 | 14.28 | 14.55 |
| 8H 4H | 13.49 | 13.54 | 13.71 | 13.74 | 14.00 | 14.07 | 14.12 | 14.29 | 14.33 | 14.58 |
| 6H | 13.41 | 13.45 | 13.66 | 13.69 | 13.96 | 13.99 | 14.03 | 14.24 | 14.27 | 14.54 |
| 8H | 13.39 | 13.44 | 13.66 | 13.68 | 13.96 | 13.98 | 14.02 | 14.24 | 14.26 | 14.54 |
| 12H | 13.38 | 13.42 | 13.65 | 13.67 | 13.95 | 13.96 | 14.00 | 14.23 | 14.25 | 14.53 |
| 12H 4H | 13.42 | 13.47 | 13.67 | 13.70 | 13.97 | 14.00 | 14.05 | 14.25 | 14.28 | 14.55 |
| 6H | 13.39 | 13.44 | 13.66 | 13.68 | 13.96 | 13.98 | 14.02 | 14.24 | 14.26 | 14.54 |

C角度范围: 0 - 360 Deg
 C角度间隔: 45.0 Deg
 测试速度: High
 环境温度:
 测试人员:
 测试日期: 2002-1-1 5:48:16

G角度范围: 0 - 90 Deg
 G角度间隔: 1.0 Deg
 测试系统: Huipu CPM-1800B Goniophotometer
 环境湿度:
 测试距离: 9.22 m
 备注:

空间等照度曲线



Unit of illumination: lx

- | | |
|----------|---------|
| — 10.239 | — 5.119 |
| — 9.215 | — 4.095 |
| — 8.191 | — 3.072 |
| — 7.167 | — 2.048 |
| — 6.143 | — 1.024 |

C角度范围: 0 - 360 Deg
 C角度间隔: 45.0 Deg
 测试速度: High
 环境温度:
 测试人员:
 测试日期: 2002-1-1 5:48:16

G角度范围: 0 - 90 Deg
 G角度间隔: 1.0 Deg
 测试系统: Huipu CPM-1800B Goniophotometer
 环境湿度:
 测试距离: 9.22 m
 备注:

报告编号:

测试时间: 2002-1-1 5:48:16

光强分布数据

| Gamma\C | C0 | C45 | C90 | C135 | C180 | C225 | C270 | C315 | C360 | |
|---------|---------|---------|---------|---------|---------|---------|---------|---------|---------|--|
| G0 | 983.29 | 972.33 | 977.77 | 978.79 | 983.29 | 972.33 | 977.77 | 978.79 | 983.29 | |
| G1 | 987.46 | 972.33 | 972.75 | 975.39 | 986.01 | 973.26 | 978.28 | 981.34 | 987.46 | |
| G2 | 989.92 | 979.13 | 975.22 | 981.0 | 984.14 | 974.79 | 983.55 | 987.37 | 989.92 | |
| G3 | 995.36 | 985.33 | 979.04 | 983.21 | 986.61 | 977.68 | 989.75 | 993.24 | 995.36 | |
| G4 | 1006.5 | 990.01 | 983.12 | 988.39 | 990.35 | 982.61 | 996.13 | 1001.99 | 1006.5 | |
| G5 | 1011.69 | 992.98 | 989.16 | 993.75 | 992.3 | 985.25 | 1004.2 | 1012.71 | 1011.69 | |
| G6 | 1022.65 | 1004.63 | 996.72 | 1006.07 | 1000.29 | 989.41 | 1012.71 | 1027.84 | 1022.65 | |
| G7 | 1031.83 | 1010.84 | 1007.1 | 1014.24 | 1007.52 | 995.7 | 1017.21 | 1036.68 | 1031.83 | |
| G8 | 1046.88 | 1016.36 | 1018.23 | 1026.05 | 1013.98 | 1003.1 | 1028.86 | 1050.96 | 1046.88 | |
| G9 | 1054.1 | 1023.33 | 1025.46 | 1033.45 | 1023.59 | 1010.67 | 1030.81 | 1061.59 | 1054.1 | |
| G10 | 1062.18 | 1033.96 | 1035.66 | 1042.03 | 1025.2 | 1017.13 | 1034.55 | 1072.72 | 1062.18 | |
| G11 | 1067.96 | 1041.18 | 1042.54 | 1048.92 | 1030.22 | 1015.94 | 1037.95 | 1078.76 | 1067.96 | |
| G12 | 1072.64 | 1048.24 | 1043.9 | 1048.75 | 1027.33 | 1019.25 | 1037.87 | 1088.19 | 1072.64 | |
| G13 | 1075.36 | 1051.13 | 1048.66 | 1047.81 | 1024.69 | 1018.32 | 1034.55 | 1091.34 | 1075.36 | |
| G14 | 1075.44 | 1055.21 | 1050.62 | 1046.2 | 1022.74 | 1013.3 | 1022.65 | 1090.32 | 1075.44 | |
| G15 | 1069.66 | 1054.44 | 1051.3 | 1032.6 | 1010.16 | 1006.33 | 1003.78 | 1078.93 | 1069.66 | |
| G16 | 1061.42 | 1043.73 | 1047.9 | 1021.8 | 998.85 | 988.48 | 981.59 | 1062.61 | 1061.42 | |
| G17 | 1043.99 | 1030.39 | 1036.93 | 996.21 | 973.01 | 966.63 | 943.42 | 1038.63 | 1043.99 | |
| G18 | 1015.43 | 1008.8 | 1017.21 | 963.57 | 939.68 | 931.78 | 901.09 | 1001.23 | 1015.43 | |
| G19 | 977.43 | 972.5 | 991.54 | 923.87 | 902.36 | 888.51 | 852.12 | 960.25 | 977.43 | |
| G20 | 932.88 | 933.22 | 955.07 | 877.71 | 858.58 | 846.51 | 796.44 | 905.25 | 932.88 | |
| G21 | 881.45 | 881.71 | 913.76 | 826.88 | 808.51 | 794.49 | 738.47 | 850.42 | 881.45 | |
| G22 | 823.31 | 833.42 | 865.9 | 773.49 | 756.32 | 739.49 | 677.26 | 788.2 | 823.31 | |
| G23 | 762.53 | 775.45 | 812.26 | 711.01 | 697.66 | 679.47 | 612.15 | 724.36 | 762.53 | |
| G24 | 698.51 | 712.2 | 758.02 | 652.95 | 636.29 | 618.27 | 547.11 | 657.71 | 698.51 | |
| G25 | 627.96 | 645.3 | 692.22 | 588.43 | 570.92 | 553.4 | 482.93 | 591.57 | 627.96 | |
| G26 | 561.06 | 579.76 | 628.89 | 526.37 | 504.52 | 491.35 | 419.86 | 522.12 | 561.06 | |
| G27 | 491.94 | 511.16 | 563.95 | 462.45 | 441.45 | 427.93 | 361.8 | 456.75 | 491.94 | |
| G28 | 424.11 | 443.74 | 496.7 | 400.9 | 380.24 | 369.11 | 307.05 | 391.29 | 424.11 | |
| G29 | 361.03 | 378.46 | 432.86 | 343.01 | 323.2 | 313.6 | 256.98 | 333.15 | 361.03 | |
| G30 | 302.63 | 320.31 | 372.17 | 291.07 | 272.79 | 263.53 | 210.82 | 277.04 | 302.63 | |
| G31 | 248.22 | 264.55 | 316.15 | 242.44 | 227.14 | 218.13 | 170.1 | 227.14 | 248.22 | |
| G32 | 198.75 | 214.05 | 264.46 | 199.43 | 184.89 | 178.35 | 133.21 | 181.07 | 198.75 | |
| G33 | 153.95 | 167.13 | 216.86 | 159.65 | 146.04 | 140.52 | 100.99 | 141.2 | 153.95 | |
| G34 | 116.8 | 127.94 | 174.86 | 124.79 | 111.79 | 106.77 | 76.42 | 108.05 | 116.8 | |
| G35 | 88.24 | 95.38 | 136.27 | 94.95 | 84.5 | 80.93 | 58.49 | 83.39 | 88.24 | |
| G36 | 67.07 | 73.19 | 104.14 | 72.09 | 65.2 | 62.57 | 44.71 | 64.18 | 67.07 | |

C角度范围: 0 - 360 Deg
C角度间隔: 45.0 Deg
测试速度: High
环境温度:
测试人员:
测试日期: 2002-1-1 5:48:16

G角度范围: 0 - 90 Deg
G角度间隔: 1.0 Deg
测试系统: Huipu CPM-1800B Goniophotometer
环境湿度:
测试距离: 9.22 m
备注:

报告编号:

测试时间: 2002-1-1 5:48:16

光强分布数据(Continue 1)

| Gamma/C | C0 | C45 | C90 | C135 | C180 | C225 | C270 | C315 | C360 |
|---------|-------|-------|-------|-------|-------|-------|-------|-------|-------|
| G37 | 50.49 | 54.83 | 80.67 | 55.85 | 50.07 | 48.11 | 33.32 | 48.79 | 50.49 |
| G38 | 36.98 | 40.8 | 63.16 | 43.27 | 38.0 | 36.81 | 23.38 | 36.55 | 36.98 |
| G39 | 25.59 | 28.82 | 48.96 | 32.05 | 28.05 | 26.95 | 15.56 | 26.1 | 25.59 |
| G40 | 16.58 | 19.38 | 37.49 | 23.12 | 20.4 | 19.3 | 9.44 | 18.02 | 16.58 |
| G41 | 9.86 | 11.65 | 27.03 | 15.56 | 14.37 | 13.43 | 4.93 | 11.99 | 9.86 |
| G42 | 5.19 | 6.29 | 19.21 | 9.69 | 9.61 | 8.84 | 2.04 | 7.91 | 5.19 |
| G43 | 2.13 | 2.81 | 12.92 | 5.53 | 6.29 | 5.61 | 0.0 | 4.85 | 2.13 |
| G44 | 0.0 | 0.43 | 8.59 | 2.3 | 3.91 | 3.23 | 0.0 | 2.64 | 0.0 |
| G45 | 0.0 | 0.0 | 5.27 | 0.0 | 2.21 | 1.7 | 0.0 | 1.45 | 0.0 |
| G46 | 0.0 | 0.0 | 2.89 | 0.0 | 1.36 | 0.94 | 0.0 | 0.85 | 0.0 |
| G47 | 0.0 | 0.0 | 1.53 | 0.0 | 0.68 | 0.51 | 0.0 | 0.51 | 0.0 |
| G48 | 0.0 | 0.0 | 0.94 | 0.0 | 0.43 | 0.26 | 0.0 | 0.26 | 0.0 |
| G49 | 0.0 | 0.0 | 0.43 | 0.0 | 0.09 | 0.0 | 0.0 | 0.0 | 0.0 |
| G50 | 0.0 | 0.0 | 0.17 | 0.0 | 0.0 | 0.0 | 0.0 | 0.0 | 0.0 |
| G51 | 0.0 | 0.0 | 0.0 | 0.0 | 0.0 | 0.0 | 0.0 | 0.0 | 0.0 |
| G52 | 0.0 | 0.0 | 0.0 | 0.0 | 0.0 | 0.0 | 0.0 | 0.0 | 0.0 |
| G53 | 0.0 | 0.0 | 0.0 | 0.0 | 0.0 | 0.0 | 0.0 | 0.0 | 0.0 |
| G54 | 0.0 | 0.0 | 0.0 | 0.0 | 0.0 | 0.0 | 0.0 | 0.0 | 0.0 |
| G55 | 0.0 | 0.0 | 0.0 | 0.0 | 0.0 | 0.0 | 0.0 | 0.0 | 0.0 |
| G56 | 0.0 | 0.0 | 0.0 | 0.0 | 0.0 | 0.0 | 0.0 | 0.0 | 0.0 |
| G57 | 0.0 | 0.0 | 0.0 | 0.0 | 0.0 | 0.0 | 0.0 | 0.0 | 0.0 |
| G58 | 0.0 | 0.0 | 0.0 | 0.0 | 0.0 | 0.0 | 0.0 | 0.0 | 0.0 |
| G59 | 0.0 | 0.0 | 0.0 | 0.0 | 0.0 | 0.0 | 0.0 | 0.0 | 0.0 |
| G60 | 0.0 | 0.0 | 0.0 | 0.0 | 0.0 | 0.0 | 0.0 | 0.0 | 0.0 |
| G61 | 0.0 | 0.0 | 0.0 | 0.0 | 0.0 | 0.0 | 0.0 | 0.0 | 0.0 |
| G62 | 0.0 | 0.0 | 0.0 | 0.0 | 0.0 | 0.0 | 0.0 | 0.0 | 0.0 |
| G63 | 0.0 | 0.0 | 0.0 | 0.0 | 0.0 | 0.0 | 0.0 | 0.0 | 0.0 |
| G64 | 0.0 | 0.0 | 0.0 | 0.0 | 0.0 | 0.0 | 0.0 | 0.0 | 0.0 |
| G65 | 0.0 | 0.0 | 0.0 | 0.0 | 0.0 | 0.0 | 0.0 | 0.0 | 0.0 |
| G66 | 0.0 | 0.0 | 0.0 | 0.0 | 0.0 | 0.0 | 0.0 | 0.0 | 0.0 |
| G67 | 0.0 | 0.0 | 0.0 | 0.0 | 0.0 | 0.0 | 0.0 | 0.0 | 0.0 |
| G68 | 0.0 | 0.0 | 0.0 | 0.0 | 0.0 | 0.0 | 0.0 | 0.0 | 0.0 |
| G69 | 0.0 | 0.0 | 0.0 | 0.0 | 0.0 | 0.0 | 0.0 | 0.0 | 0.0 |
| G70 | 0.0 | 0.0 | 0.0 | 0.0 | 0.0 | 0.0 | 0.0 | 0.0 | 0.0 |
| G71 | 0.0 | 0.0 | 0.0 | 0.0 | 0.0 | 0.0 | 0.0 | 0.0 | 0.0 |
| G72 | 0.0 | 0.0 | 0.0 | 0.0 | 0.0 | 0.0 | 0.0 | 0.0 | 0.0 |
| G73 | 0.0 | 0.0 | 0.0 | 0.0 | 0.0 | 0.0 | 0.0 | 0.0 | 0.0 |

C角度范围: 0 - 360 Deg
C角度间隔: 45.0 Deg
测试速度: High
环境温度:
测试人员:
测试日期: 2002-1-1 5:48:16

G角度范围: 0 - 90 Deg
G角度间隔: 1.0 Deg
测试系统: Huipu CPM-1800B Goniophotometer
环境湿度:
测试距离: 9.22 m
备注:

