

报告编号:

测试时间: 2002-1-1 5:31:01

## 灯具光度测试报告

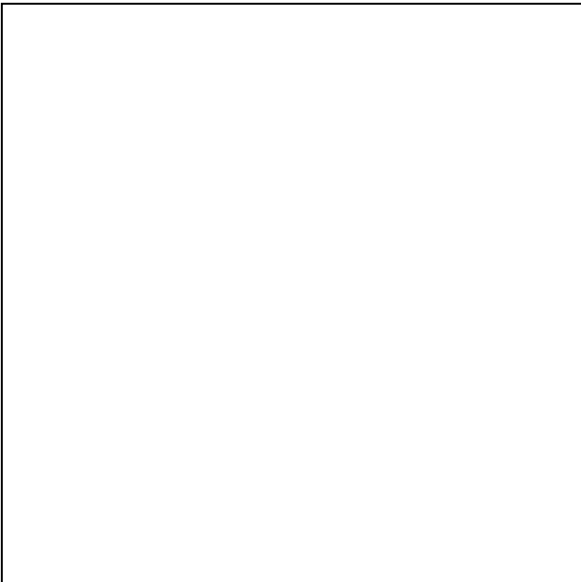
### 灯具属性

|              |                 |
|--------------|-----------------|
| 生产工厂: 0      | 电压(V): 220.91 V |
| 灯具规格:        | 电流(A): 0.0723 A |
| 光源规格:        | 功率(W): 9.52 W   |
| 发光面宽度: 80 mm | 功率因数: 0.5962    |
| 发光面长度: 80 mm | 光源光通量: 553.87   |
| 发光面高度: 80 mm |                 |

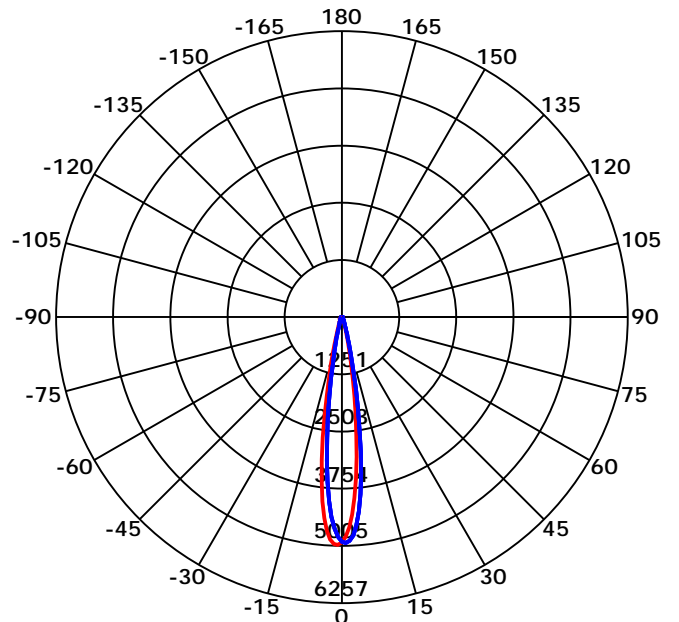
### 光度结果

|                                     |                                       |
|-------------------------------------|---------------------------------------|
| CIE 等级: Direct                      | 最大光强: 5005.38 cd                      |
| 灯具光通量: 553.8737 lm                  | 最大光强角: C=135 Gamma=1                  |
| 下射光通比: 100.00%                      | 上射光通比: 0.00%                          |
| 灯具光效(LER): 58.18 lm/W               | 灯具效率: 100.00%                         |
| 光束角(50%) C0-180,C90-270: 16.6,16.5  | 中心光强: 4929.64 cd                      |
| 视场角(10%) C0-180,C90-270: 30.1,29.7  | 有效光通量: 419.30 lm                      |
| 距高比S/MH C0-180,C90-270: 0.317,0.317 | 光通量ERP( $\varphi$ use)120度: 552.63 lm |

灯具图片



光强分布曲线



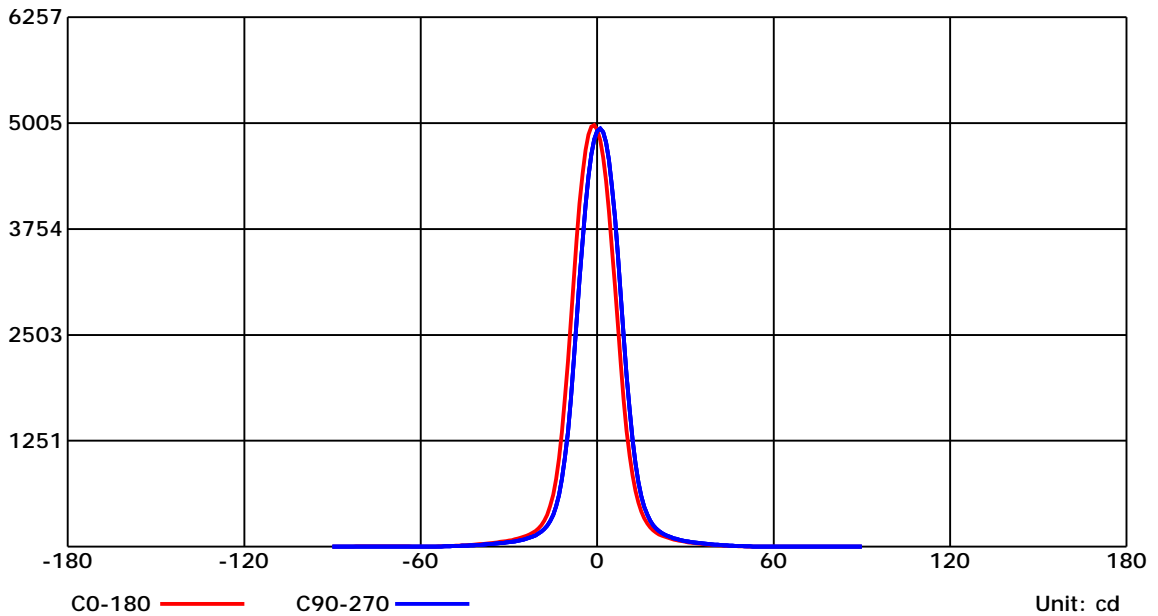
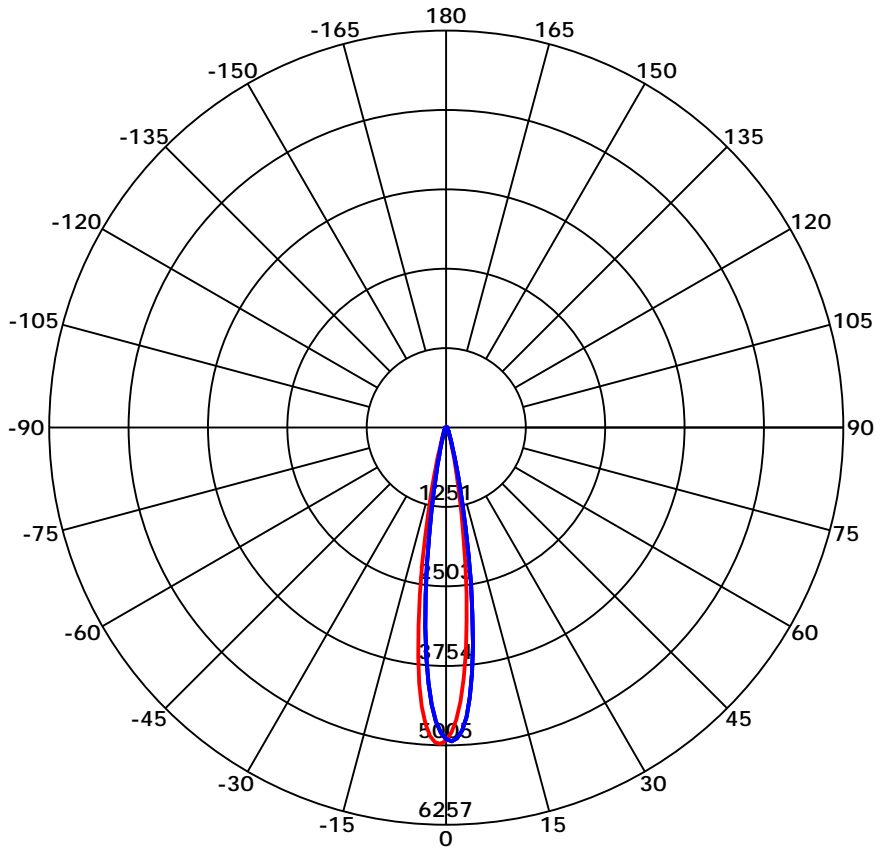
光束角(50%) C0-180,C90-270: 16.6 deg,16.5 deg

C0-180 — C90-270

C角度范围: 0 - 360 Deg  
 C角度间隔: 45.0 Deg  
 测试速度: High  
 环境温度:  
 测试人员:  
 测试日期: 2002-1-1 5:31:01

G角度范围: 0 - 90 Deg  
 G角度间隔: 1.0 Deg  
 测试系统: Huipu CPM-1800B Goniophotometer  
 环境湿度:  
 测试距离: 9.22 m  
 备注:

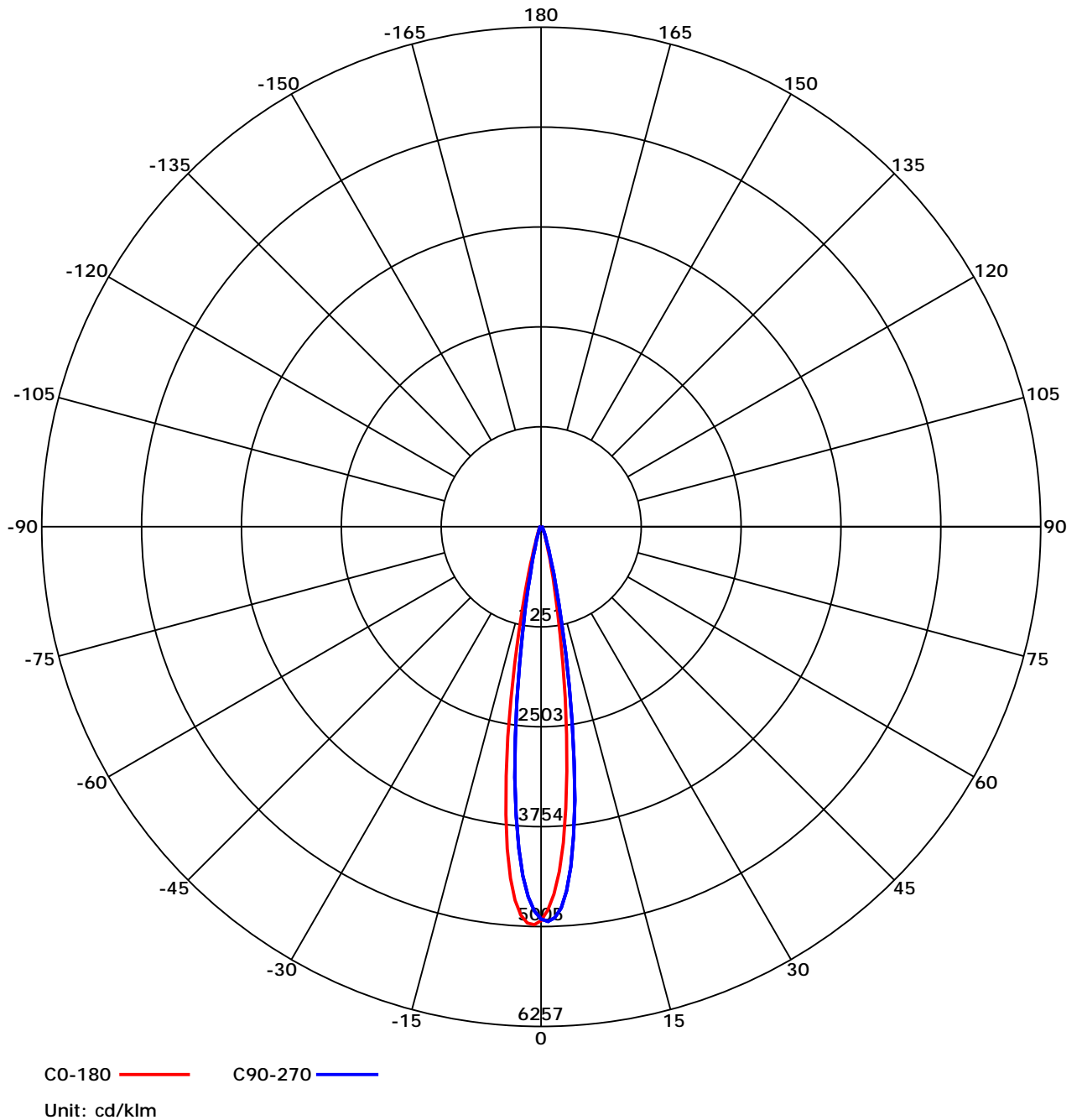
### 光强分布曲线



C角度范围: 0 - 360 Deg  
 C角度间隔: 45.0 Deg  
 测试速度: High  
 环境温度:  
 测试人员:  
 测试日期: 2002-1-1 5:31:01

G角度范围: 0 - 90 Deg  
 G角度间隔: 1.0 Deg  
 测试系统: Huipu CPM-1800B Goniophotometer  
 环境湿度:  
 测试距离: 9.22 m  
 备注:

## 光强分布曲线



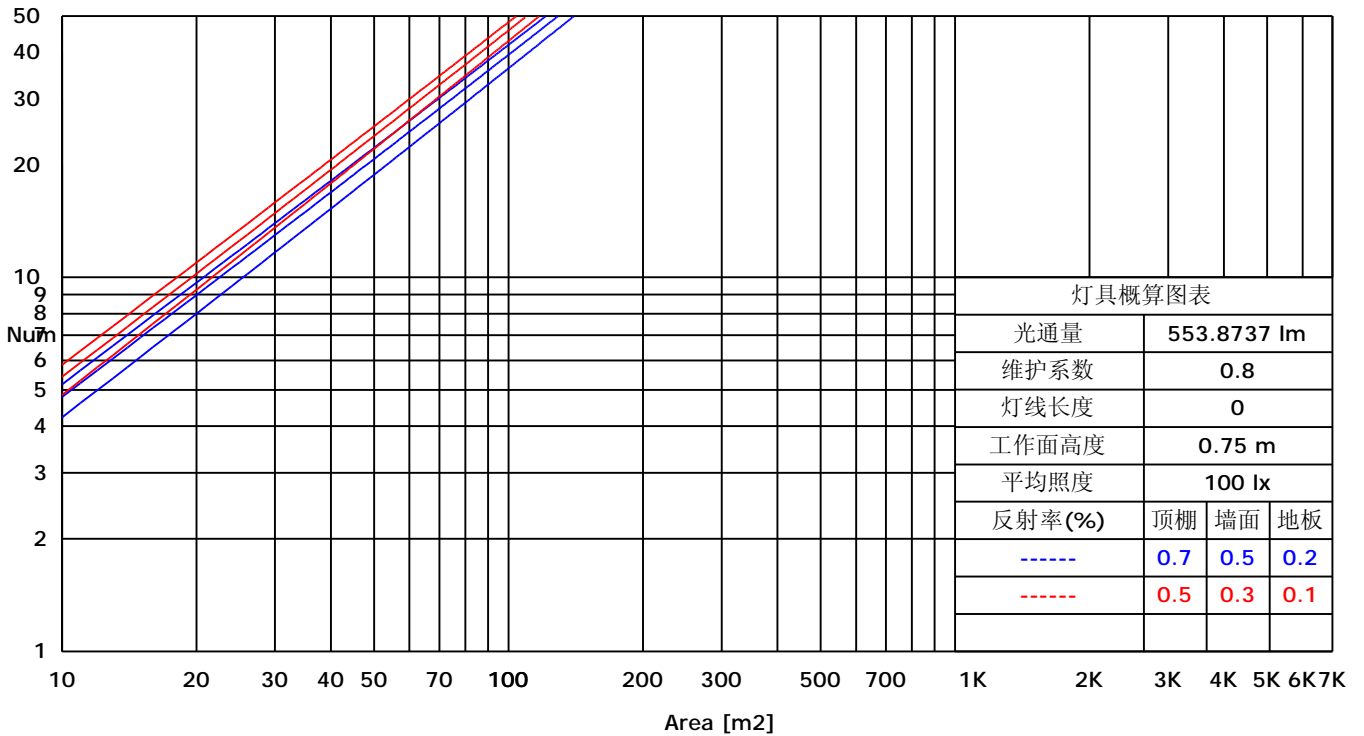
C角度范围: 0 - 360 Deg  
 C角度间隔: 45.0 Deg  
 测试速度: High  
 环境温度:  
 测试人员:  
 测试日期: 2002-1-1 5:31:01

G角度范围: 0 - 90 Deg  
 G角度间隔: 1.0 Deg  
 测试系统: Huipu CPM-1800B Goniophotometer  
 环境湿度:  
 测试距离: 9.22 m  
 备注:

### 利用系数图表(TM5)

| RHOCC | 80                                       |      |      | 70   |      |      | 50   |      |      | 30   |      |      | 10   |      |      | 0    |
|-------|--|------|------|------|------|------|------|------|------|------|------|------|------|------|------|------|
| RHOW  | 50                                       | 30   | 10   | 50   | 30   | 10   | 50   | 30   | 10   | 50   | 30   | 10   | 50   | 30   | 10   | 0    |
| RCR   | COEFFICIENTS OF UTILIZATION FOR RHOFC=20 |      |      |      |      |      |      |      |      |      |      |      |      |      |      |      |
| 0     | 1.19                                     | 1.19 | 1.19 | 1.16 | 1.16 | 1.16 | 1.11 | 1.11 | 1.11 | 1.06 | 1.06 | 1.06 | 1.02 | 1.02 | 1.02 | 1.00 |
| 1     | 0.65                                     | 0.60 | 0.55 | 0.66 | 0.60 | 0.55 | 0.65 | 0.59 | 0.53 | 0.63 | 0.57 | 0.50 | 0.60 | 0.54 | 0.47 | 0.42 |
| 2     | 0.61                                     | 0.57 | 0.53 | 0.62 | 0.57 | 0.53 | 0.62 | 0.56 | 0.51 | 0.61 | 0.54 | 0.49 | 0.59 | 0.52 | 0.46 | 0.41 |
| 3     | 0.59                                     | 0.55 | 0.52 | 0.60 | 0.55 | 0.51 | 0.60 | 0.54 | 0.49 | 0.59 | 0.53 | 0.47 | 0.57 | 0.50 | 0.44 | 0.40 |
| 4     | 0.56                                     | 0.53 | 0.51 | 0.57 | 0.53 | 0.50 | 0.58 | 0.52 | 0.48 | 0.57 | 0.51 | 0.46 | 0.56 | 0.49 | 0.43 | 0.39 |
| 5     | 0.55                                     | 0.52 | 0.50 | 0.55 | 0.52 | 0.49 | 0.56 | 0.51 | 0.47 | 0.56 | 0.50 | 0.45 | 0.54 | 0.48 | 0.42 | 0.39 |
| 6     | 0.53                                     | 0.51 | 0.49 | 0.54 | 0.50 | 0.48 | 0.54 | 0.49 | 0.46 | 0.54 | 0.48 | 0.44 | 0.53 | 0.47 | 0.42 | 0.38 |
| 7     | 0.52                                     | 0.50 | 0.48 | 0.53 | 0.49 | 0.47 | 0.53 | 0.48 | 0.45 | 0.53 | 0.47 | 0.43 | 0.52 | 0.46 | 0.41 | 0.37 |
| 8     | 0.51                                     | 0.49 | 0.47 | 0.51 | 0.48 | 0.46 | 0.52 | 0.47 | 0.44 | 0.51 | 0.46 | 0.42 | 0.51 | 0.45 | 0.40 | 0.37 |
| 9     | 0.50                                     | 0.48 | 0.47 | 0.50 | 0.47 | 0.46 | 0.51 | 0.46 | 0.44 | 0.50 | 0.45 | 0.42 | 0.50 | 0.44 | 0.39 | 0.36 |
| 10    | 0.49                                     | 0.47 | 0.46 | 0.49 | 0.47 | 0.45 | 0.50 | 0.46 | 0.43 | 0.49 | 0.44 | 0.41 | 0.49 | 0.43 | 0.39 | 0.36 |

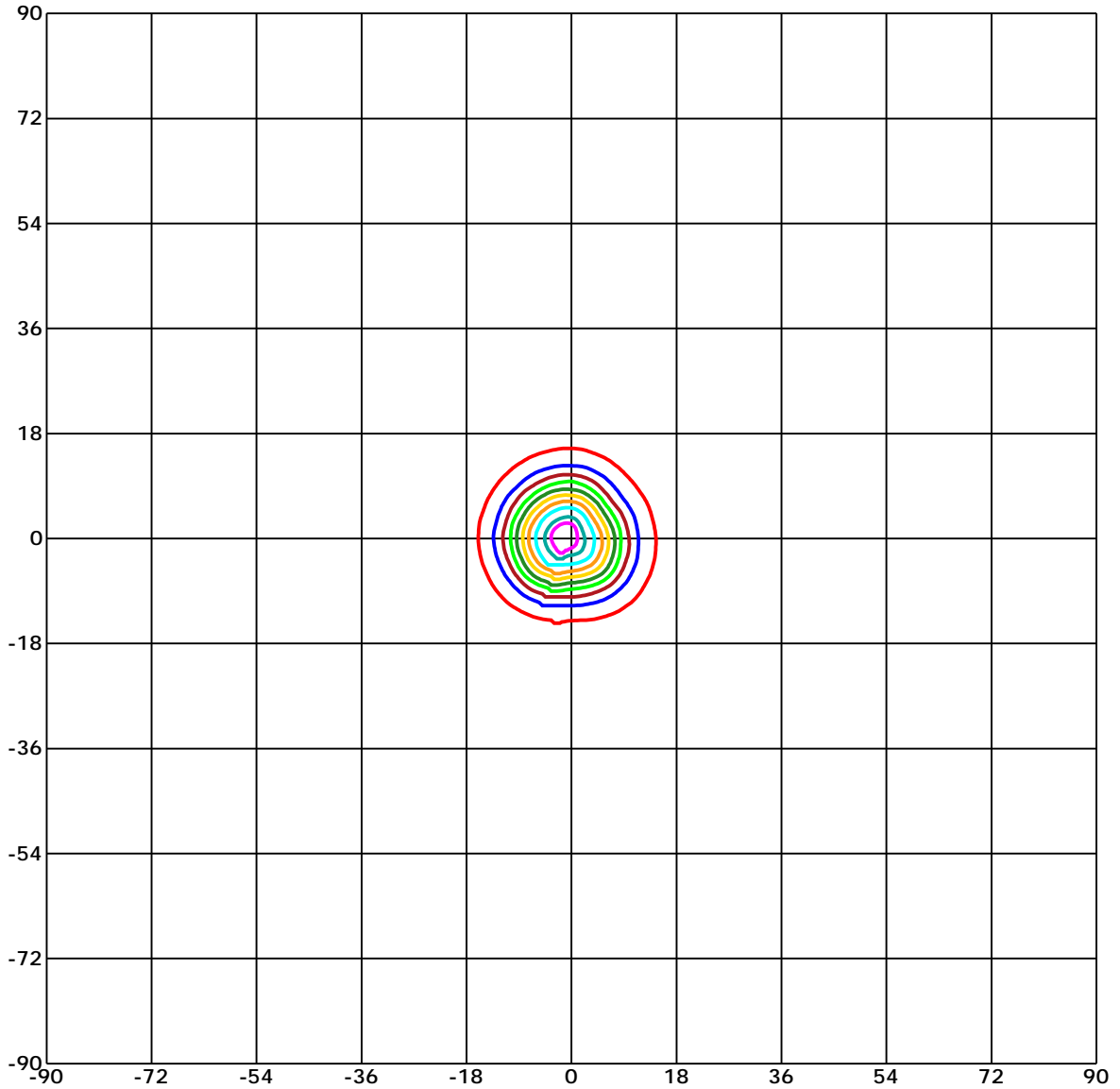
### 概算曲线



C角度范围: 0 - 360 Deg  
 C角度间隔: 45.0 Deg  
 测试速度: High  
 环境温度:  
 测试人员:  
 测试日期: 2002-1-1 5:31:01

G角度范围: 0 - 90 Deg  
 G角度间隔: 1.0 Deg  
 测试系统: Huipu CPM-1800B Goniophotometer  
 环境湿度:  
 测试距离: 9.22 m  
 备注:

### 矩形等光强曲线



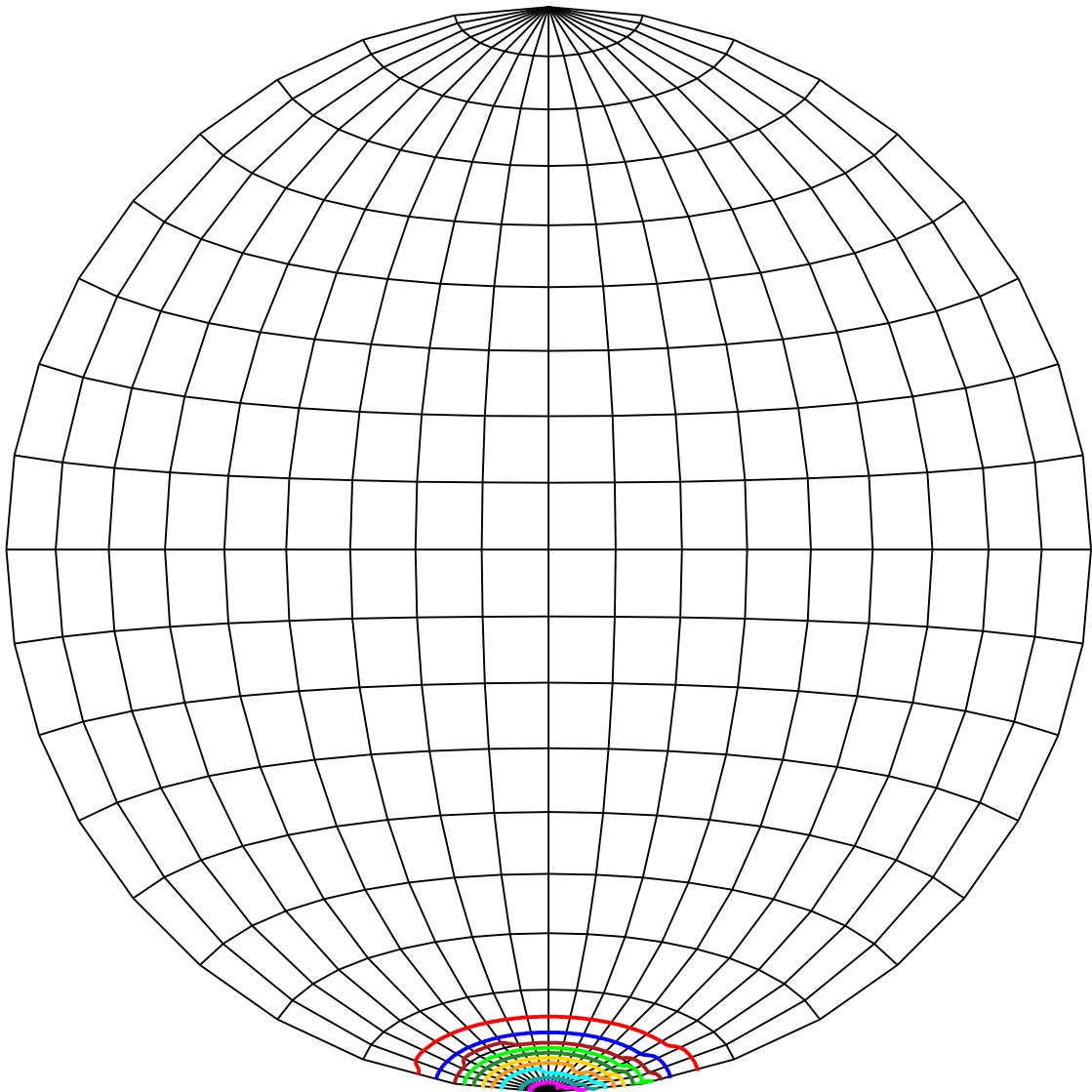
Unit of intensity:cd      Imax(100%): 5005.38 cd

- |                     |                     |
|---------------------|---------------------|
| — 4755.111(95%Imax) | — 2502.69(50%Imax)  |
| — 4504.842(90%Imax) | — 2002.152(40%Imax) |
| — 4004.304(80%Imax) | — 1501.614(30%Imax) |
| — 3503.766(70%Imax) | — 1001.076(20%Imax) |
| — 3003.228(60%Imax) | — 500.538(10%Imax)  |

C角度范围: 0 - 360 Deg  
 C角度间隔: 45.0 Deg  
 测试速度: High  
 环境温度:  
 测试人员:  
 测试日期: 2002-1-1 5:31:01

G角度范围: 0 - 90 Deg  
 G角度间隔: 1.0 Deg  
 测试系统: Huipu CPM-1800B Goniophotometer  
 环境湿度:  
 测试距离: 9.22 m  
 备注:

### 球面等光强曲线



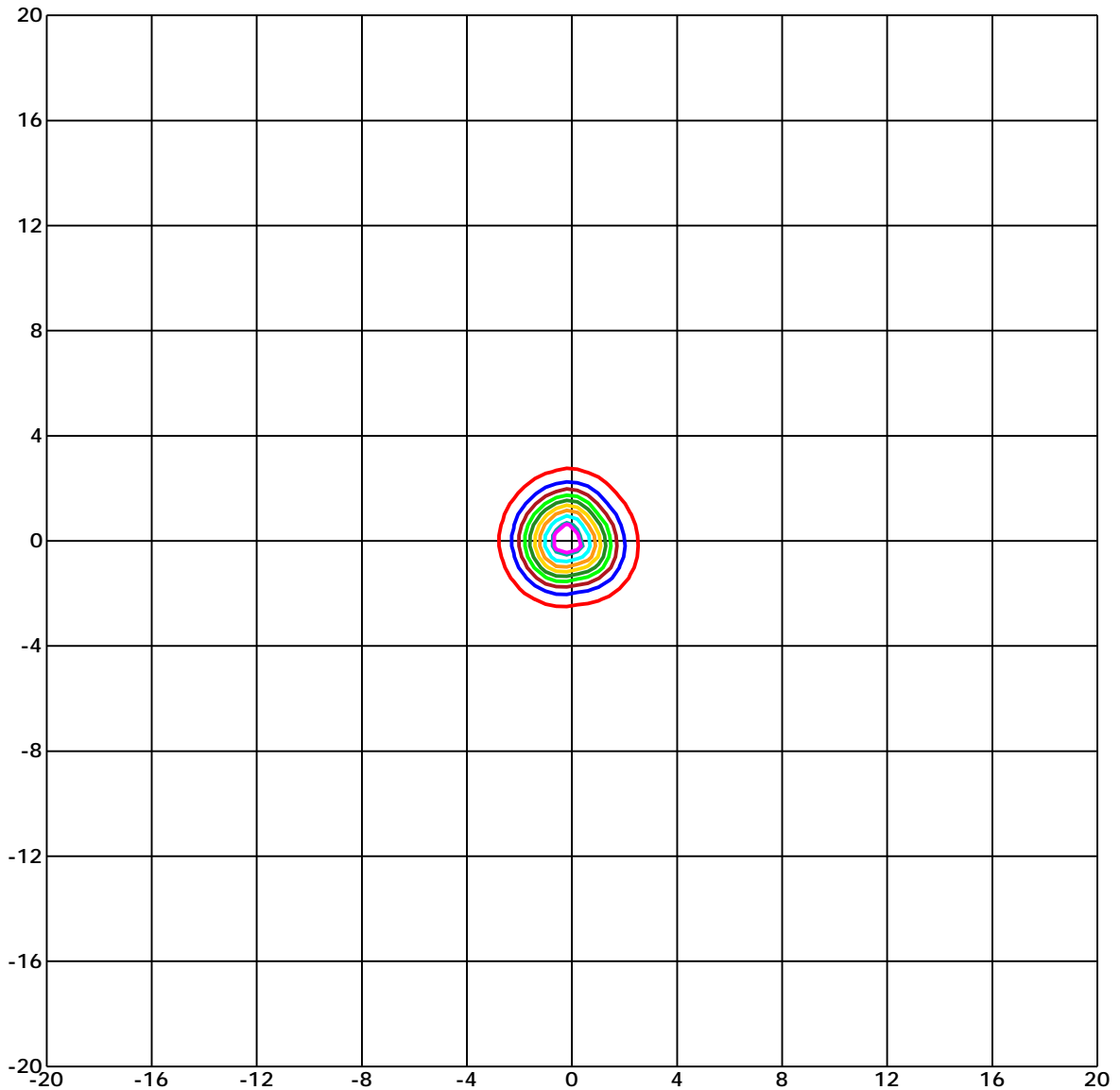
Unit of intensity:cd      I<sub>max</sub>(100%): 5005.38 cd

- |                                  |                                  |
|----------------------------------|----------------------------------|
| — 4755.111(95%I <sub>max</sub> ) | — 2502.69(50%I <sub>max</sub> )  |
| — 4504.842(90%I <sub>max</sub> ) | — 2002.152(40%I <sub>max</sub> ) |
| — 4004.304(80%I <sub>max</sub> ) | — 1501.614(30%I <sub>max</sub> ) |
| — 3503.766(70%I <sub>max</sub> ) | — 1001.076(20%I <sub>max</sub> ) |
| — 3003.228(60%I <sub>max</sub> ) | — 500.538(10%I <sub>max</sub> )  |

C角度范围: 0 - 360 Deg  
 C角度间隔: 45.0 Deg  
 测试速度: High  
 环境温度:  
 测试人员:  
 测试日期: 2002-1-1 5:31:01

G角度范围: 0 - 90 Deg  
 G角度间隔: 1.0 Deg  
 测试系统: Huipu CPM-1800B Goniophotometer  
 环境湿度:  
 测试距离: 9.22 m  
 备注:

## 平面等照度曲线



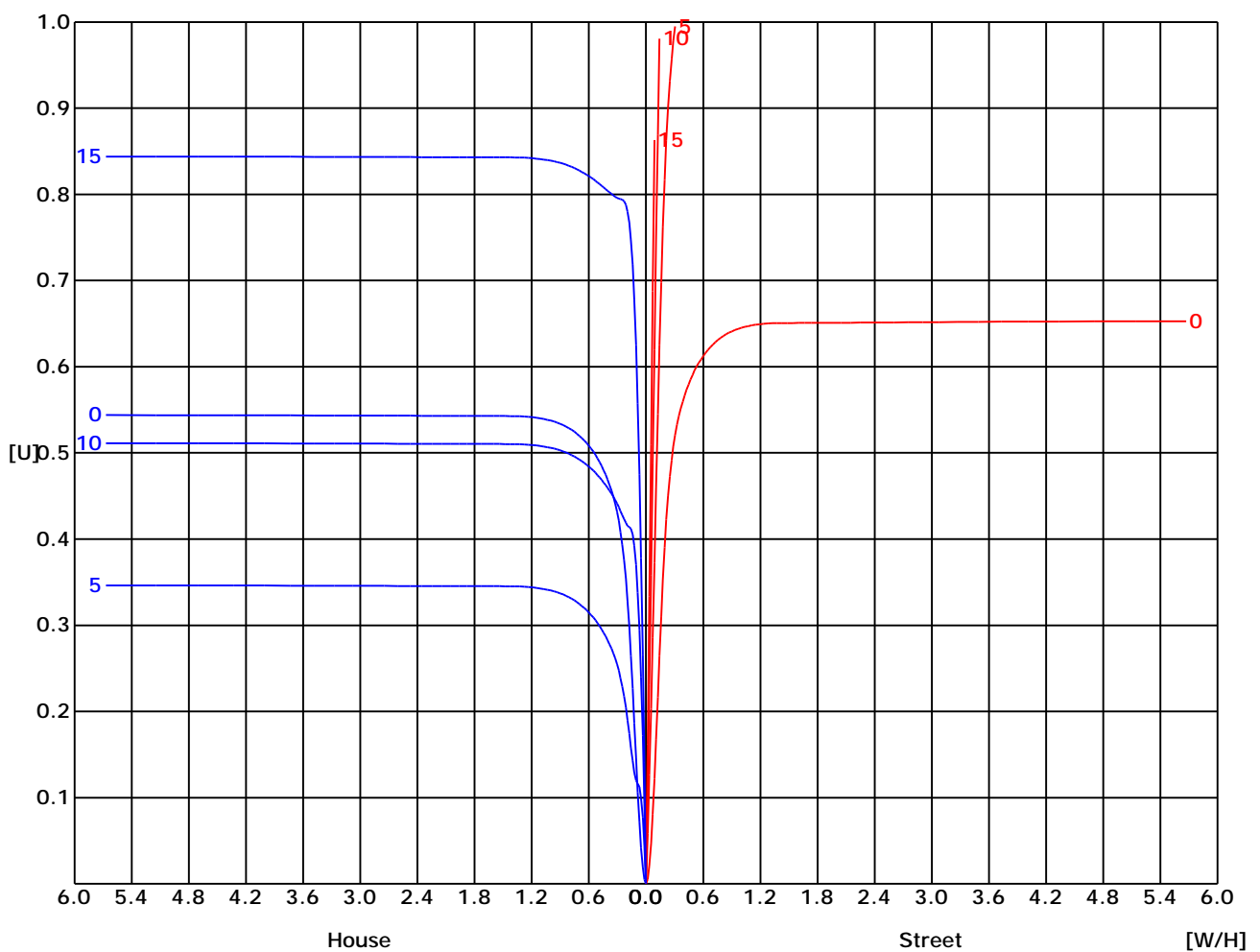
Unit of illumination: lx      Height of plane: 10.0(m)/32.81(ft)

- |                               |                               |
|-------------------------------|-------------------------------|
| — 46.028(1%E <sub>max</sub> ) | — 25.015(0%E <sub>max</sub> ) |
| — 45.028(1%E <sub>max</sub> ) | — 20.012(0%E <sub>max</sub> ) |
| — 40.025(1%E <sub>max</sub> ) | — 15.009(0%E <sub>max</sub> ) |
| — 35.022(1%E <sub>max</sub> ) | — 10.006(0%E <sub>max</sub> ) |
| — 30.019(1%E <sub>max</sub> ) | — 5.003(0%E <sub>max</sub> )  |

C角度范围: 0 - 360 Deg  
 C角度间隔: 45.0 Deg  
 测试速度: High  
 环境温度:  
 测试人员:  
 测试日期: 2002-1-1 5:31:01

G角度范围: 0 - 90 Deg  
 G角度间隔: 1.0 Deg  
 测试系统: Huipu CPM-1800B Goniophotometer  
 环境湿度:  
 测试距离: 9.22 m  
 备注:

### 路灯利用系数曲线



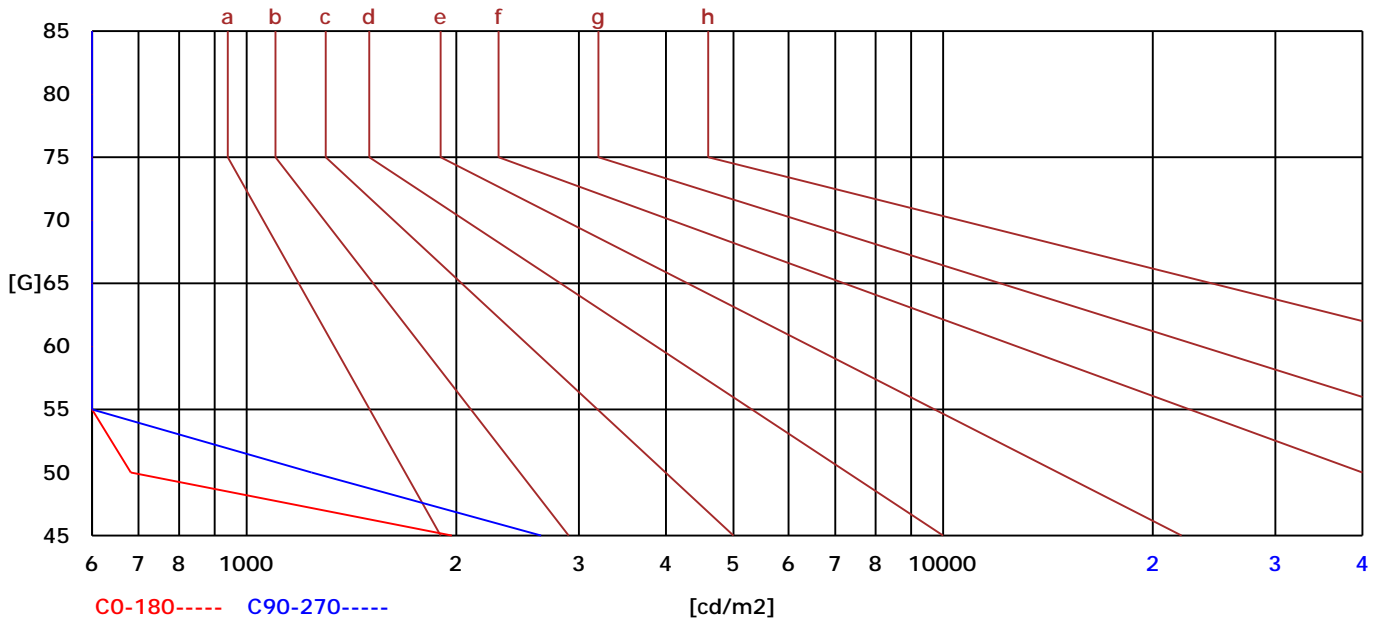
C角度范围: 0 - 360 Deg  
 C角度间隔: 45.0 Deg  
 测试速度: High  
 环境温度:  
 测试人员:  
 测试日期: 2002-1-1 5:31:01

G角度范围: 0 - 90 Deg  
 G角度间隔: 1.0 Deg  
 测试系统: Huipu CPM-1800B Goniophotometer  
 环境湿度:  
 测试距离: 9.22 m  
 备注:



### 亮度限制曲线

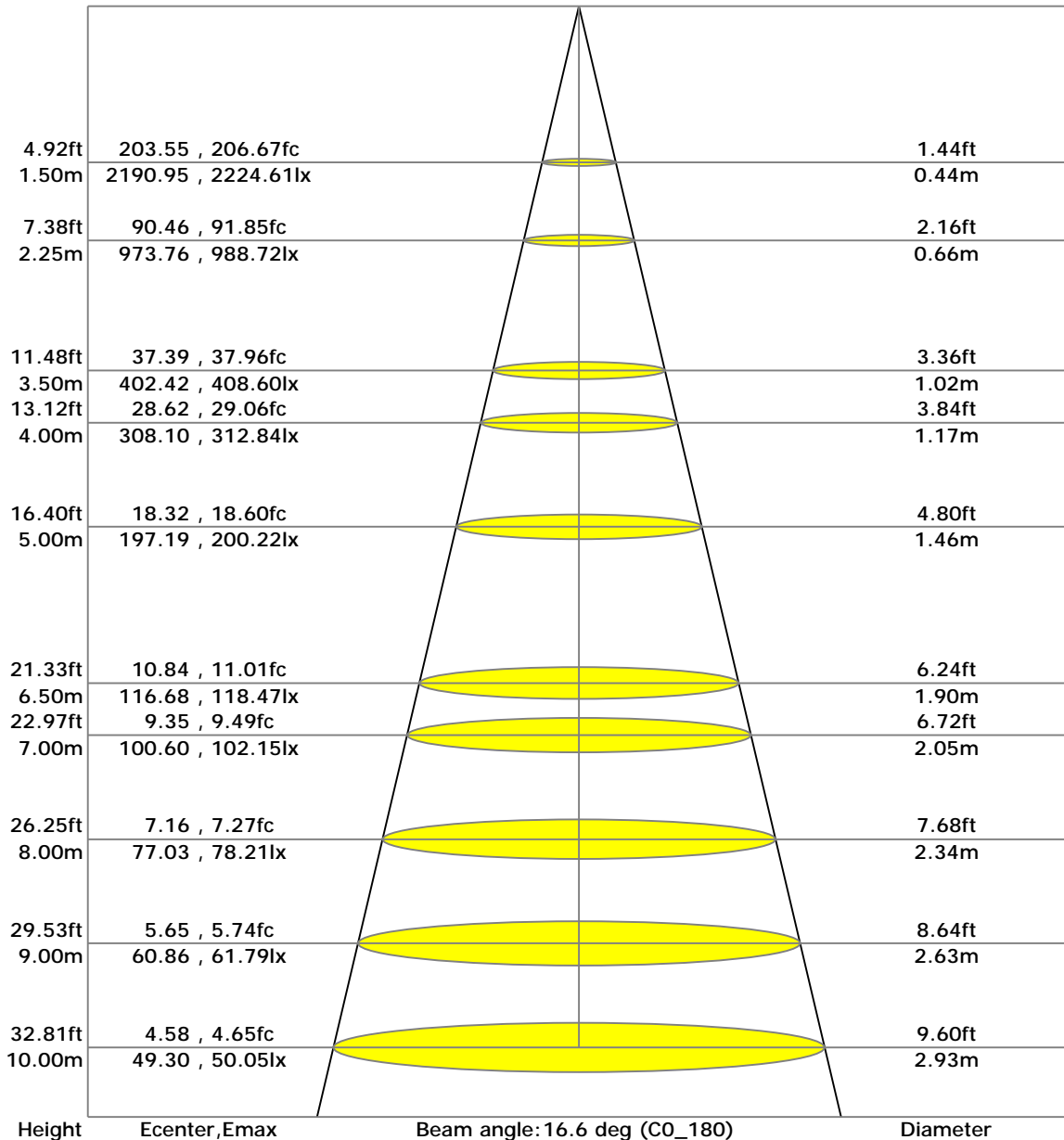
|        |         |             |      |      |       |       |       |       |       |
|--------|---------|-------------|------|------|-------|-------|-------|-------|-------|
| C/G    | 45      | 50          | 55   | 60   | 65    | 70    | 75    | 80    | 85    |
| C0     | 1972    | 682         | 0    | 0    | 0     | 0     | 0     | 0     | 0     |
| C90    | 2649    | 1240        | 0    | 0    | 0     | 0     | 0     | 0     | 0     |
| Dazzle | Quality | Illuminance | ---  | ---  | ---   | ---   | ---   | ---   | ---   |
| 1.15   | A       | 2000        | 1000 | 500  | <=300 |       |       |       |       |
| 1.5    | B       |             | 2000 | 1000 | 500   | <=300 |       |       |       |
| 1.85   | C       |             |      | 2000 | 1000  | 500   | <=300 |       |       |
| 2.2    | D       |             |      |      | 2000  | 1000  | 500   | <=300 |       |
| 2.55   | E       |             |      |      |       | 2000  | 1000  | 500   | <=300 |
| ---    | ---     | a           | b    | c    | d     | e     | f     | g     | h     |



C角度范围: 0 - 360 Deg  
 C角度间隔: 45.0 Deg  
 测试速度: High  
 环境温度:  
 测试人员:  
 测试日期: 2002-1-1 5:31:01

G角度范围: 0 - 90 Deg  
 G角度间隔: 1.0 Deg  
 测试系统: Huipu CPM-1800B Goniophotometer  
 环境湿度:  
 测试距离: 9.22 m  
 备注:

### 照度距离曲线



C角度范围: 0 - 360 Deg  
 C角度间隔: 45.0 Deg  
 测试速度: High  
 环境温度:  
 测试人员:  
 测试日期: 2002-1-1 5:31:01

G角度范围: 0 - 90 Deg  
 G角度间隔: 1.0 Deg  
 测试系统: Huipu CPM-1800B Goniophotometer  
 环境湿度:  
 测试距离: 9.22 m  
 备注:

## UGR(Unified Glare Rating) TABLE

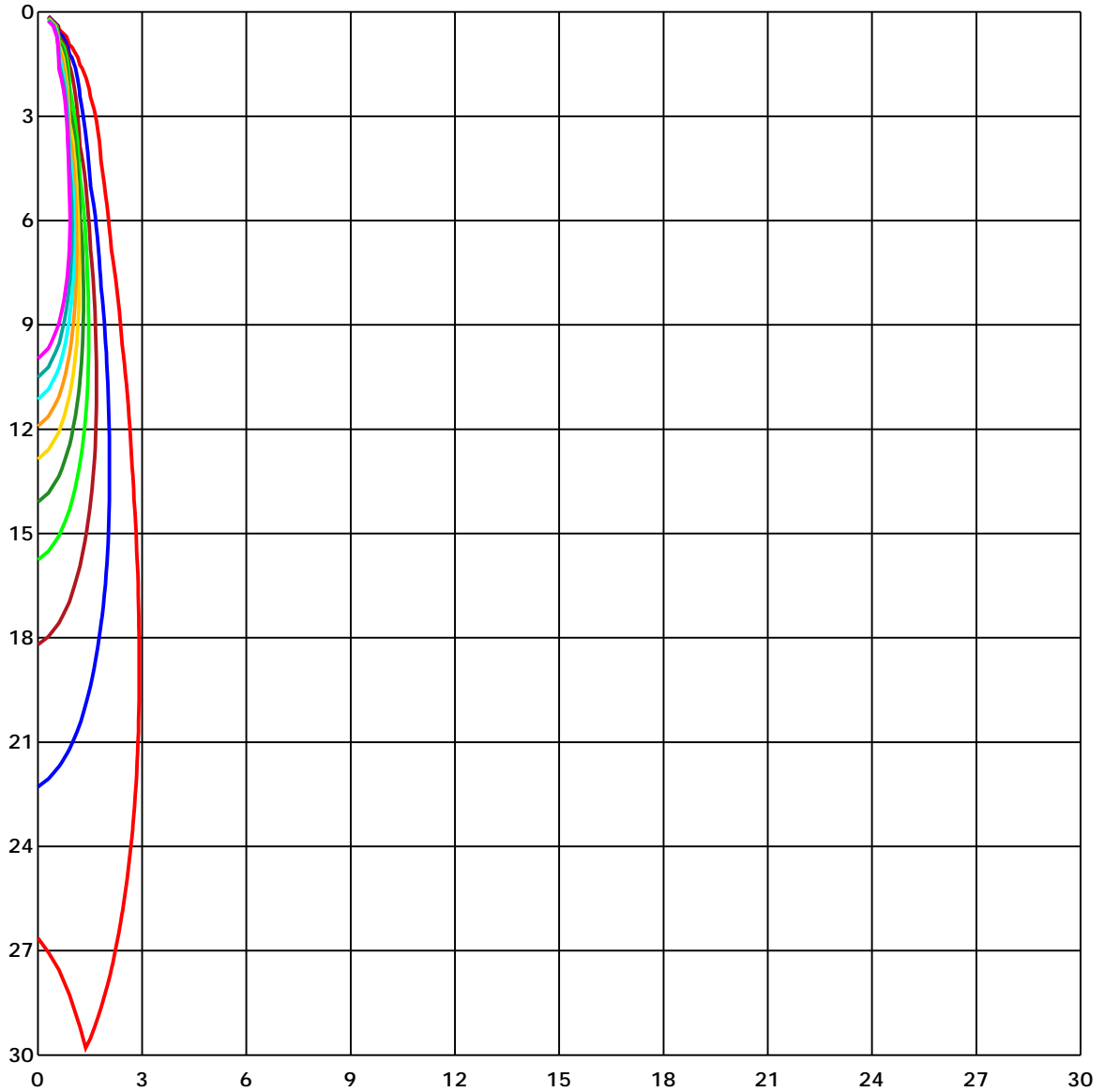
|             |                     |      |      |      |      |                       |      |      |      |      |
|-------------|---------------------|------|------|------|------|-----------------------|------|------|------|------|
| 天花板反射比      | 70                  | 70   | 50   | 50   | 30   | 70                    | 70   | 50   | 50   | 30   |
| 墙面反射比       | 50                  | 30   | 50   | 30   | 30   | 50                    | 30   | 50   | 30   | 30   |
| 地面反射比       | 20                  | 20   | 20   | 20   | 20   | 20                    | 20   | 20   | 20   | 20   |
| 房间尺寸<br>X Y | 向前 (Viewed Endwise) |      |      |      |      | 交叉 (Viewed Crosswise) |      |      |      |      |
| 2H 2H       | 5.65                | 5.73 | 5.85 | 5.92 | 6.16 | 6.24                  | 6.32 | 6.44 | 6.51 | 6.75 |
| 3H          | 5.62                | 5.71 | 5.83 | 5.90 | 6.15 | 6.21                  | 6.30 | 6.42 | 6.49 | 6.74 |
| 4H          | 5.61                | 5.70 | 5.82 | 5.89 | 6.14 | 6.20                  | 6.28 | 6.41 | 6.48 | 6.73 |
| 6H          | 5.59                | 5.68 | 5.81 | 5.88 | 6.14 | 6.18                  | 6.27 | 6.40 | 6.47 | 6.72 |
| 8H          | 5.58                | 5.67 | 5.80 | 5.88 | 6.13 | 6.17                  | 6.26 | 6.39 | 6.47 | 6.72 |
| 12H         | 5.57                | 5.66 | 5.80 | 5.87 | 6.13 | 6.16                  | 6.25 | 6.38 | 6.46 | 6.72 |
| 4H 2H       | 5.61                | 5.70 | 5.82 | 5.89 | 6.14 | 6.20                  | 6.28 | 6.41 | 6.48 | 6.73 |
| 3H          | 5.57                | 5.66 | 5.80 | 5.87 | 6.13 | 6.16                  | 6.25 | 6.38 | 6.46 | 6.72 |
| 4H          | 5.55                | 5.64 | 5.78 | 5.86 | 6.12 | 6.14                  | 6.23 | 6.37 | 6.45 | 6.71 |
| 6H          | 5.52                | 5.62 | 5.77 | 5.84 | 6.11 | 6.11                  | 6.21 | 6.36 | 6.43 | 6.70 |
| 8H          | 5.51                | 5.60 | 5.76 | 5.83 | 6.10 | 6.10                  | 6.19 | 6.35 | 6.42 | 6.69 |
| 12H         | 5.50                | 5.59 | 5.75 | 5.82 | 6.10 | 6.09                  | 6.18 | 6.34 | 6.41 | 6.69 |
| 8H 4H       | 5.58                | 5.67 | 5.80 | 5.88 | 6.13 | 6.17                  | 6.26 | 6.39 | 6.47 | 6.72 |
| 6H          | 5.48                | 5.57 | 5.74 | 5.81 | 6.09 | 6.07                  | 6.16 | 6.33 | 6.40 | 6.68 |
| 8H          | 5.47                | 5.55 | 5.73 | 5.80 | 6.09 | 6.05                  | 6.14 | 6.32 | 6.39 | 6.68 |
| 12H         | 5.45                | 5.53 | 5.72 | 5.79 | 6.08 | 6.04                  | 6.12 | 6.31 | 6.38 | 6.67 |
| 12H 4H      | 5.50                | 5.59 | 5.75 | 5.82 | 6.10 | 6.09                  | 6.18 | 6.34 | 6.41 | 6.69 |
| 6H          | 5.47                | 5.55 | 5.73 | 5.80 | 6.09 | 6.05                  | 6.14 | 6.32 | 6.39 | 6.68 |

C角度范围: 0 - 360 Deg  
 C角度间隔: 45.0 Deg  
 测试速度: High  
 环境温度:  
 测试人员:  
 测试日期: 2002-1-1 5:31:01

G角度范围: 0 - 90 Deg  
 G角度间隔: 1.0 Deg  
 测试系统: Huipu CPM-1800B Goniophotometer  
 环境湿度:  
 测试距离: 9.22 m  
 备注:



### 空间等照度曲线



Unit of illumination: lx

- |          |          |
|----------|----------|
| — 49.628 | — 24.814 |
| — 44.665 | — 19.851 |
| — 39.703 | — 14.889 |
| — 34.74  | — 9.926  |
| — 29.777 | — 4.963  |

C角度范围: 0 - 360 Deg  
 C角度间隔: 45.0 Deg  
 测试速度: High  
 环境温度:  
 测试人员:  
 测试日期: 2002-1-1 5:31:01

G角度范围: 0 - 90 Deg  
 G角度间隔: 1.0 Deg  
 测试系统: Huipu CPM-1800B Goniophotometer  
 环境湿度:  
 测试距离: 9.22 m  
 备注:

报告编号:

测试时间: 2002-1-1 5:31:01

### 光强分布数据

| Gamma/C | C0      | C45     | C90     | C135    | C180    | C225    | C270    | C315    | C360    |  |
|---------|---------|---------|---------|---------|---------|---------|---------|---------|---------|--|
| G0      | 4929.64 | 4861.63 | 4912.55 | 4985.74 | 4929.64 | 4861.63 | 4912.55 | 4985.74 | 4929.64 |  |
| G1      | 4801.79 | 4749.76 | 4942.05 | 5005.38 | 4983.87 | 4900.74 | 4810.88 | 4893.08 | 4801.79 |  |
| G2      | 4601.17 | 4559.09 | 4898.78 | 4952.08 | 4964.07 | 4866.65 | 4633.3  | 4728.59 | 4601.17 |  |
| G3      | 4323.19 | 4281.02 | 4779.34 | 4818.53 | 4869.71 | 4761.15 | 4374.62 | 4489.63 | 4323.19 |  |
| G4      | 3964.54 | 3915.83 | 4568.78 | 4597.85 | 4686.94 | 4569.12 | 4034.41 | 4176.63 | 3964.54 |  |
| G5      | 3538.99 | 3485.26 | 4267.59 | 4289.69 | 4415.85 | 4290.71 | 3620.08 | 3798.69 | 3538.99 |  |
| G6      | 3076.88 | 3012.95 | 3889.3  | 3910.3  | 4056.43 | 3917.87 | 3156.02 | 3363.61 | 3076.88 |  |
| G7      | 2621.4  | 2535.46 | 3450.66 | 3461.29 | 3630.45 | 3472.0  | 2664.08 | 2897.68 | 2621.4  |  |
| G8      | 2161.59 | 2063.49 | 2966.37 | 2980.23 | 3148.29 | 2984.31 | 2190.5  | 2449.26 | 2161.59 |  |
| G9      | 1730.94 | 1648.57 | 2491.0  | 2506.81 | 2664.93 | 2498.06 | 1738.51 | 2002.37 | 1730.94 |  |
| G10     | 1369.4  | 1310.83 | 2027.2  | 2049.81 | 2186.93 | 2011.47 | 1351.29 | 1611.16 | 1369.4  |  |
| G11     | 1069.15 | 1034.64 | 1610.48 | 1629.19 | 1738.42 | 1575.8  | 1039.65 | 1271.13 | 1069.15 |  |
| G12     | 840.56  | 821.01  | 1261.87 | 1280.65 | 1352.74 | 1200.4  | 798.4   | 995.53  | 840.56  |  |
| G13     | 660.01  | 645.38  | 982.78  | 993.24  | 1040.59 | 912.82  | 611.64  | 776.04  | 660.01  |  |
| G14     | 524.84  | 514.05  | 763.89  | 766.78  | 798.23  | 701.06  | 475.96  | 610.96  | 524.84  |  |
| G15     | 416.54  | 410.08  | 598.54  | 589.36  | 613.08  | 543.2   | 376.5   | 483.36  | 416.54  |  |
| G16     | 336.38  | 330.09  | 472.9   | 456.67  | 477.92  | 426.83  | 301.69  | 386.02  | 336.38  |  |
| G17     | 275.26  | 271.09  | 379.22  | 361.71  | 377.18  | 342.5   | 248.05  | 312.24  | 275.26  |  |
| G18     | 229.61  | 226.04  | 307.22  | 292.26  | 306.46  | 280.78  | 207.85  | 258.17  | 229.61  |  |
| G19     | 193.82  | 191.18  | 255.2   | 239.98  | 254.09  | 236.41  | 177.75  | 217.71  | 193.82  |  |
| G20     | 167.72  | 165.85  | 216.01  | 202.15  | 215.58  | 200.79  | 154.29  | 186.0   | 167.72  |  |
| G21     | 146.3   | 145.53  | 185.49  | 173.59  | 186.17  | 174.01  | 134.82  | 161.6   | 146.3   |  |
| G22     | 130.57  | 128.79  | 161.43  | 151.74  | 163.39  | 154.04  | 119.86  | 142.98  | 130.57  |  |
| G23     | 116.55  | 115.19  | 141.88  | 133.38  | 145.53  | 137.46  | 107.45  | 127.68  | 116.55  |  |
| G24     | 105.58  | 103.12  | 126.49  | 118.93  | 130.32  | 122.84  | 96.14   | 114.0   | 105.58  |  |
| G25     | 94.95   | 92.57   | 113.06  | 106.26  | 117.23  | 110.77  | 85.86   | 102.78  | 94.95   |  |
| G26     | 85.86   | 82.88   | 101.16  | 95.55   | 106.26  | 99.97   | 77.27   | 92.91   | 85.86   |  |
| G27     | 77.53   | 74.3    | 90.79   | 85.6    | 95.63   | 89.77   | 69.79   | 83.73   | 77.53   |  |
| G28     | 70.47   | 67.16   | 81.86   | 77.53   | 86.54   | 80.76   | 62.99   | 76.0    | 70.47   |  |
| G29     | 63.84   | 60.87   | 73.7    | 70.39   | 78.55   | 73.02   | 57.47   | 68.86   | 63.84   |  |
| G30     | 57.81   | 54.66   | 66.56   | 63.93   | 72.17   | 66.82   | 52.54   | 63.08   | 57.81   |  |
| G31     | 51.94   | 49.39   | 60.36   | 57.98   | 66.05   | 61.55   | 48.37   | 57.55   | 51.94   |  |
| G32     | 47.01   | 44.88   | 55.09   | 52.79   | 60.95   | 56.96   | 44.46   | 52.03   | 47.01   |  |
| G33     | 42.67   | 41.14   | 49.81   | 47.77   | 55.94   | 52.71   | 40.89   | 47.43   | 42.67   |  |
| G34     | 39.1    | 37.4    | 45.65   | 43.18   | 51.18   | 48.88   | 37.57   | 43.27   | 39.1    |  |
| G35     | 35.45   | 33.83   | 41.74   | 39.19   | 46.67   | 44.8    | 35.02   | 40.04   | 35.45   |  |
| G36     | 32.13   | 30.52   | 38.17   | 35.87   | 42.76   | 41.4    | 32.3    | 36.55   | 32.13   |  |

C角度范围: 0 - 360 Deg  
 C角度间隔: 45.0 Deg  
 测试速度: High  
 环境温度:  
 测试人员:  
 测试日期: 2002-1-1 5:31:01

G角度范围: 0 - 90 Deg  
 G角度间隔: 1.0 Deg  
 测试系统: Huipu CPM-1800B Goniophotometer  
 环境湿度:  
 测试距离: 9.22 m  
 备注:

报告编号:

测试时间: 2002-1-1 5:31:01

### 光强分布数据(Continue 1)

| Gamma/C | C0    | C45   | C90   | C135  | C180  | C225  | C270  | C315  | C360  |
|---------|-------|-------|-------|-------|-------|-------|-------|-------|-------|
| G37     | 28.56 | 27.12 | 34.94 | 32.56 | 39.27 | 38.25 | 29.41 | 33.15 | 28.56 |
| G38     | 25.59 | 24.06 | 31.62 | 29.24 | 36.21 | 35.53 | 26.69 | 29.75 | 25.59 |
| G39     | 22.61 | 21.17 | 28.14 | 26.01 | 32.9  | 32.64 | 24.31 | 26.95 | 22.61 |
| G40     | 19.89 | 18.7  | 25.25 | 23.38 | 29.84 | 29.16 | 21.76 | 23.97 | 19.89 |
| G41     | 17.26 | 16.41 | 22.19 | 20.49 | 26.69 | 26.27 | 19.3  | 21.25 | 17.26 |
| G42     | 15.22 | 14.2  | 19.64 | 18.11 | 23.97 | 23.55 | 17.09 | 18.87 | 15.22 |
| G43     | 13.18 | 12.16 | 17.43 | 15.81 | 21.42 | 21.0  | 15.3  | 16.58 | 13.18 |
| G44     | 11.31 | 10.46 | 15.47 | 13.86 | 19.13 | 18.36 | 13.6  | 14.62 | 11.31 |
| G45     | 9.69  | 8.93  | 13.6  | 11.99 | 17.0  | 16.24 | 11.99 | 12.67 | 9.69  |
| G46     | 8.33  | 7.65  | 11.73 | 10.29 | 15.05 | 14.28 | 10.54 | 11.05 | 8.33  |
| G47     | 7.14  | 6.55  | 10.12 | 8.67  | 13.09 | 12.5  | 9.35  | 9.86  | 7.14  |
| G48     | 6.12  | 5.36  | 9.01  | 7.48  | 11.39 | 11.05 | 8.33  | 8.5   | 6.12  |
| G49     | 4.93  | 4.25  | 7.82  | 6.38  | 10.12 | 9.61  | 7.14  | 7.31  | 4.93  |
| G50     | 3.57  | 2.81  | 6.63  | 5.1   | 8.76  | 8.33  | 6.04  | 6.12  | 3.57  |
| G51     | 2.04  | 1.11  | 5.44  | 3.74  | 7.48  | 7.31  | 4.76  | 4.76  | 2.04  |
| G52     | 0.68  | 0.0   | 4.0   | 2.38  | 6.04  | 5.95  | 3.32  | 3.15  | 0.68  |
| G53     | 0.0   | 0.0   | 2.47  | 0.94  | 4.34  | 4.42  | 1.96  | 1.79  | 0.0   |
| G54     | 0.0   | 0.0   | 1.28  | 0.0   | 2.98  | 2.72  | 1.02  | 1.02  | 0.0   |
| G55     | 0.0   | 0.0   | 0.6   | 0.0   | 1.96  | 1.62  | 0.34  | 0.34  | 0.0   |
| G56     | 0.0   | 0.0   | 0.0   | 0.0   | 1.19  | 0.77  | 0.0   | 0.0   | 0.0   |
| G57     | 0.0   | 0.0   | 0.0   | 0.0   | 0.85  | 0.0   | 0.0   | 0.0   | 0.0   |
| G58     | 0.0   | 0.0   | 0.0   | 0.0   | 0.77  | 0.0   | 0.0   | 0.0   | 0.0   |
| G59     | 0.0   | 0.0   | 0.0   | 0.0   | 1.11  | 0.0   | 0.0   | 0.0   | 0.0   |
| G60     | 0.0   | 0.0   | 0.0   | 0.0   | 1.87  | 0.0   | 0.0   | 0.0   | 0.0   |
| G61     | 0.0   | 0.0   | 0.0   | 0.0   | 2.21  | 0.0   | 0.0   | 0.0   | 0.0   |
| G62     | 0.0   | 0.0   | 0.0   | 0.0   | 2.55  | 0.0   | 0.0   | 0.0   | 0.0   |
| G63     | 0.0   | 0.0   | 0.0   | 0.0   | 2.81  | 0.0   | 0.0   | 0.0   | 0.0   |
| G64     | 0.0   | 0.0   | 0.0   | 0.0   | 3.15  | 0.0   | 0.0   | 0.0   | 0.0   |
| G65     | 0.0   | 0.0   | 0.0   | 0.0   | 3.49  | 0.0   | 0.0   | 0.0   | 0.0   |
| G66     | 0.0   | 0.0   | 0.0   | 0.0   | 3.66  | 0.0   | 0.0   | 0.0   | 0.0   |
| G67     | 0.0   | 0.0   | 0.0   | 0.0   | 3.91  | 0.0   | 0.0   | 0.0   | 0.0   |
| G68     | 0.0   | 0.0   | 0.0   | 0.0   | 4.08  | 0.0   | 0.0   | 0.0   | 0.0   |
| G69     | 0.0   | 0.0   | 0.0   | 0.0   | 4.42  | 0.0   | 0.0   | 0.0   | 0.0   |
| G70     | 0.0   | 0.0   | 0.0   | 0.0   | 5.02  | 0.0   | 0.0   | 0.0   | 0.0   |
| G71     | 0.0   | 0.0   | 0.0   | 0.0   | 5.27  | 0.0   | 0.0   | 0.0   | 0.0   |
| G72     | 0.0   | 0.0   | 0.0   | 0.0   | 5.36  | 0.0   | 0.0   | 0.0   | 0.0   |
| G73     | 0.0   | 0.0   | 0.0   | 0.0   | 5.36  | 0.0   | 0.0   | 0.0   | 0.0   |

C角度范围: 0 - 360 Deg  
 C角度间隔: 45.0 Deg  
 测试速度: High  
 环境温度:  
 测试人员:  
 测试日期: 2002-1-1 5:31:01

G角度范围: 0 - 90 Deg  
 G角度间隔: 1.0 Deg  
 测试系统: Huipu CPM-1800B Goniophotometer  
 环境湿度:  
 测试距离: 9.22 m  
 备注:

